



ELECTRONIC COPY

LABORATORY GROWN DIAMOND REPORT

| | |
|-------------------------|-----------------------------|
| February 24, 2024 | |
| IGI Report Number | LG623464553 |
| Description | LABORATORY GROWN DIAMOND |
| Shape and Cutting Style | SQUARE CUSHION BRILLIANT |
| Measurements | 6.68 X 6.65 X 4.51 MM |

GRADING RESULTS

| | |
|---------------|------------|
| Carat Weight | 1.51 CARAT |
| Color Grade | D |
| Clarity Grade | VS 1 |

ADDITIONAL GRADING INFORMATION

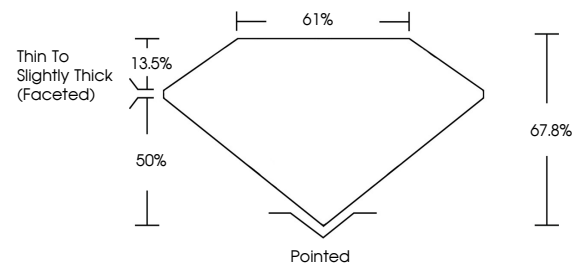
| | |
|----------------|---|
| Polish | EXCELLENT |
| Symmetry | EXCELLENT |
| Fluorescence | NONE |
| Inscription(s) |  LG623464553 |

Comments: As Grown - No indication of post-growth treatment.
This Laboratory Grown Diamond was created by High Pressure High Temperature (HPHT) growth process.
Type II

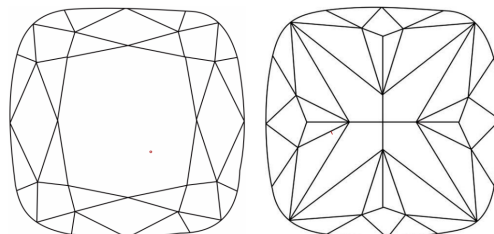
LABORATORY GROWN DIAMOND REPORT

LG623464553
Report verification at igi.org

PROPORTIONS



CLARITY CHARACTERISTICS



KEY TO SYMBOLS

Red symbols indicate internal characteristics.
Green symbols indicate external characteristics.

LABORATORY GROWN
DIAMOND REPORT

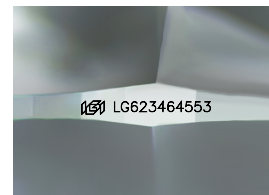
GRADING SCALES

CLARITY

| IF | VVS ¹⁻² | VS ¹⁻² | SI ¹⁻² | I ¹⁻³ |
|---------------------|-----------------------------|------------------------|-------------------|------------------|
| Internally Flawless | Very Very Slightly Included | Very Slightly Included | Slightly Included | Included |

COLOR

D E F G H I J Faint Very Light Light

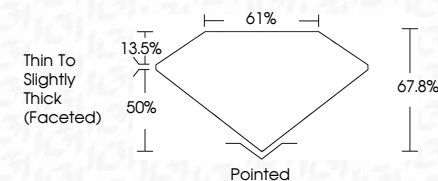


Sample Image Used



| | |
|-------------------------|-----------------------------|
| February 24, 2024 | |
| IGI Report Number | LG623464553 |
| Description | LABORATORY GROWN DIAMOND |
| Shape and Cutting Style | SQUARE CUSHION BRILLIANT |
| Measurements | 6.68 X 6.65 X 4.51 MM |

| | |
|---------------|------------|
| Carat Weight | 1.51 CARAT |
| Color Grade | D |
| Clarity Grade | VS 1 |



ADDITIONAL GRADING INFORMATION

| | |
|--|---------------------------|
| Polish | EXCELLENT |
| Symmetry | EXCELLENT |
| Fluorescence | NONE |
| Inscription(s) | LG LG623464553 |
| Comments: As Grown - No indication of post-growth treatment. | |
| This Laboratory Grown Diamond was created by High Pressure High Temperature (HPHT) growth process. | |
| Type II | |



IG



© IGI 2020, International Gemological Institute

FD - 10 20



THIS DOCUMENT WAS PRODUCED WITH THE FOLLOWING SECURITY MEASURES: SPECIAL DOCUMENT PAPER, INK SCREENS, WATERMARK BACKGROUND DESIGNS, HOLOGRAM, AND OTHER SECURITY FEATURES NOT LISTED AND DO EXCEED DOCUMENT SECURITY INDUSTRY GUIDELINES

www.igi.org

| | |
|--------------------------|------------------------|
| February 24, 2024 | 1.51 CARAT |
| GI Report No LG20344553 | D |
| SQUARE CUSHION BRILLIANT | |
| 6.68 X 6.65 X 4.51 MM | |
| Corat Weight | Vs1 |
| Color Grade | 67.6% |
| Clarity Grade | o1% |
| Depth | Thin to Slightly Thick |
| Table | (Faceted) |
| Girdle | Polished |
| Symmetry | EXCELLENT |
| Fluorescence | EXCELLENT |
| Inscriptions(s) | NONE |
| | 681 LG20344553 |

Comments: 1 - No indication of post-growth treatment.
 The Laboratory Growth Diamond was created by High Pressure High Temperature (HPHT) growth process.
 Type II