

**ELECTRONIC COPY**

## LABORATORY GROWN DIAMOND REPORT

February 28, 2024	
IGI Report Number	LG623479448
Description	LABORATORY GROWN DIAMOND
Shape and Cutting Style	ROUND BRILLIANT
Measurements	10.06 - 10.10 X 6.13 MM

## GRADING RESULTS

Carat Weight	3.83 CARATS
Color Grade	H
Clarity Grade	VS 1
Cut Grade	IDEAL

### ADDITIONAL GRADING INFORMATION

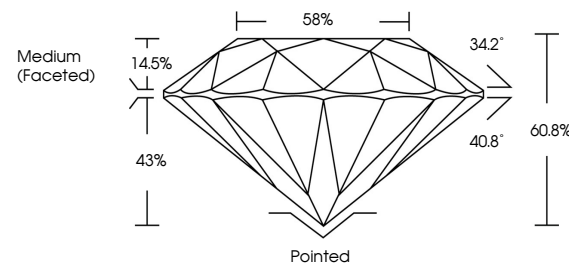
Polish	EXCELLENT
Symmetry	EXCELLENT
Fluorescence	NONE
Inscription(s)	 LG623479448

Comments: This Laboratory Grown Diamond was created by Chemical Vapor Deposition (CVD) growth process and may include post-growth treatment.  
Type IIa

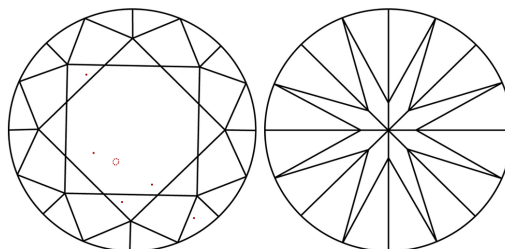
## LABORATORY GROWN DIAMOND REPORT

LG623479448  
Report verification at [igi.org](https://igi.org)

## PROPORTIONS



## CLARITY CHARACTERISTICS



## KEY TO SYMBOLS

Red symbols indicate internal characteristics.  
Green symbols indicate external characteristics.

LABORATORY GROWN  
DIAMOND REPORT

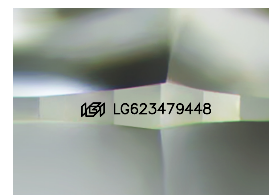
## GRADING SCALES

## CLARITY

IF	VVS <sup>1-2</sup>	VS <sup>1-2</sup>	SI <sup>1-2</sup>	I <sup>1-3</sup>
Internally Flawless	Very Very Slightly Included	Very Slightly Included	Slightly Included	Included

**COLOR**

D E F G H I J Faint Very Light Light



Sample Image Used



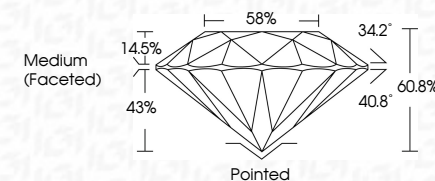
© IGI 2020, International Gemological Institute

FD - 10 20

## LABORATORY GROWN DIAMOND REPORT

February 28, 2024	
IGI Report Number	LG623479448
Description	LABORATORY GROWN DIAMOND
Shape and Cutting Style	ROUND BRILLIANT
Measurements	10.06 - 10.10 X 6.13 MM

GRADING RESULTS	
Carat Weight	3.83 CARATS
Color Grade	H
Clarity Grade	VS 1
Cut Grade	IDEAL



### ADDITIONAL GRADING INFORMATION

Polish	EXCELLENT
Symmetry	EXCELLENT
Fluorescence	NONE
Inscription(s)	(15) LG623479448

Comments: This Laboratory Grown Diamond was created by Chemical Vapor Deposition (CVD) growth process and may include post-growth treatment.  
Type IIa



February 28, 2024	3.63 CARATS	H	VS 1	Pointed
GI Report No. LG24079448	Carat Weight	Color Grade	IDEAL	EXCELLENT
ROUND BRILLIANT	10.05 - 10.10 X 6.13 MM	Clarity Grade	60.9%	EXCELLENT
		Cut Grade	56%	NONE
		Depth	Medium (faceted)	161 LG24079448
		Table		
		Girdle		
		Culet		
		Polish		
		Symmetry		
		Fluorescence		
		Inscriptions(s)		
<b>Comments:</b> Created by Chemical Vapor Deposition (CVD) growth process and may include post-growth treatment.				
Type IIa				