



ELECTRONIC COPY

LG623487647

Report verification at igi.org

LABORATORY GROWN DIAMOND REPORT

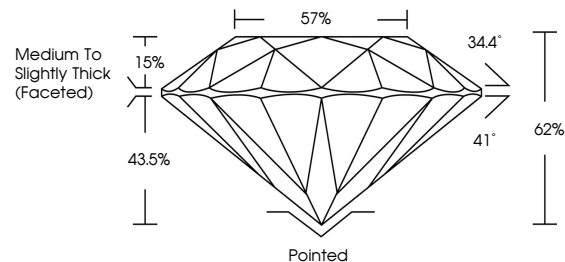
March 7, 2024
 IGI Report Number **LG623487647**
 Description **LABORATORY GROWN
DIAMOND**
 Shape and Cutting Style **ROUND BRILLIANT**
 Measurements **6.40 - 6.44 X 3.98 MM**
GRADING RESULTS
 Carat Weight **1.01 CARAT**
 Color Grade **H**
 Clarity Grade **VS 2**
 Cut Grade **VERY GOOD**

ADDITIONAL GRADING INFORMATION

Polish **EXCELLENT**
 Symmetry **GOOD**
 Fluorescence **NONE**
 Inscription(s) **IGI LG623487647**

Comments: This Laboratory Grown Diamond was created by Chemical Vapor Deposition (CVD) growth process and may include post-growth treatment. Type IIa

PROPORTIONS



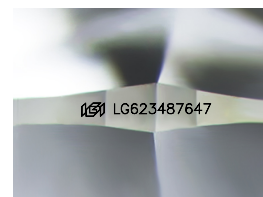
GRADING SCALES

CLARITY

IF	VVS ¹⁻²	VS ¹⁻²	SI ¹⁻²	I ¹⁻³
Internally Flawless	Very Very Slightly Included	Very Slightly Included	Slightly Included	Included

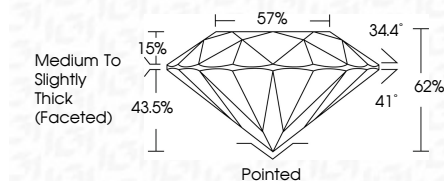
COLOR

D	E	F	G	H	I	J	Faint	Very Light	Light
---	---	---	---	---	---	---	-------	------------	-------



Sample Image Used

March 7, 2024
 IGI Report Number **LG623487647**
 Description **LABORATORY GROWN
DIAMOND**
 Shape and Cutting Style **ROUND BRILLIANT**
 Measurements **6.40 - 6.44 X 3.98 MM**
GRADING RESULTS
 Carat Weight **1.01 CARAT**
 Color Grade **H**
 Clarity Grade **VS 2**
 Cut Grade **VERY GOOD**



ADDITIONAL GRADING INFORMATION

Polish **EXCELLENT**
 Symmetry **GOOD**
 Fluorescence **NONE**
 Inscription(s) **IGI LG623487647**
 Comments: This Laboratory Grown Diamond was created by Chemical Vapor Deposition (CVD) growth process and may include post-growth treatment. Type IIa



IGI



March 7, 2024
 IGI Report No. **LG623487647**
ROUND BRILLIANT
 Carat Weight **1.01 CARAT**
 Color Grade **H**
 Clarity Grade **VS 2**
 Cut Grade **VERY GOOD**
 Depth **62%**
 Table **57%**
 Girdle **Medium To Slightly Thick (Faceted)**
 Culet **Pointed**
 Polish **EXCELLENT**
 Symmetry **GOOD**
 Fluorescence **NONE**
 Inscription(s) **IGI LG623487647**

Comments: This Laboratory Grown Diamond was created by Chemical Vapor Deposition (CVD) growth process and may include post-growth treatment. Type IIa