

ELECTRONIC COPY

LABORATORY GROWN DIAMOND REPORT

February 28, 2024	
IGI Report Number	LG623488821
Description	LABORATORY GROWN DIAMOND
Shape and Cutting Style	SQUARE CUSHION BRILLIANT
Measurements	7.61 X 7.34 X 4.69 MM

GRADING RESULTS

Carat Weight	2.03 CARATS
Color Grade	F
Clarity Grade	VS 1

ADDITIONAL GRADING INFORMATION

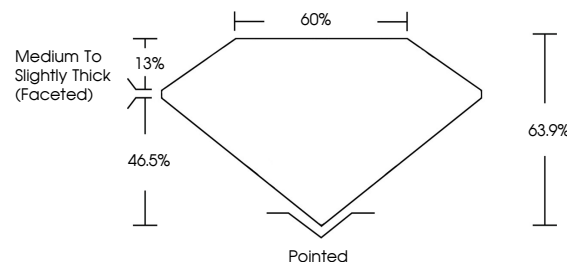
Polish	EXCELLENT
Symmetry	EXCELLENT
Fluorescence	NONE
Inscription(s)	 LG623488821

Comments: As Grown - No indication of post-growth treatment.
This Laboratory Grown Diamond was created by High Pressure High Temperature (HPHT) growth process.
Type II

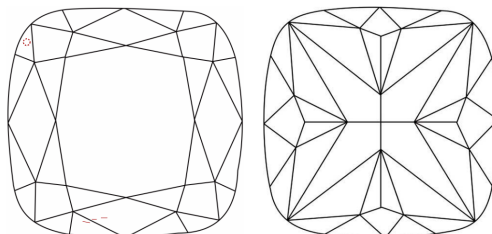
LABORATORY GROWN DIAMOND REPORT

LG623488821
Report verification at lgi.org

PROPORTIONS



CLARITY CHARACTERISTICS



KEY TO SYMBOLS

Red symbols indicate internal characteristics.
Green symbols indicate external characteristics.

LABORATORY GROWN
DIAMOND REPORT

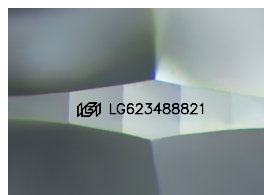
GRADING SCALES

CLARITY

IF	VVS ¹⁻²	VS ¹⁻²	SI ¹⁻²	I ¹⁻³
Internally Flawless	Very Very Slightly Included	Very Slightly Included	Slightly Included	Included

COLOR

D E F G H I J Faint Very Light Light



Sample Image Used

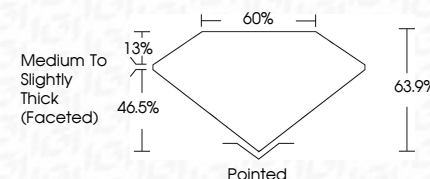


© IGI 2020, International Gemological Institute

FD - 10 20



February 28, 2024	
IGI Report Number	LG623488821
Description	LABORATORY GROWN DIAMOND
Shape and Cutting Style	SQUARE CUSHION BRILLIANT
Measurements	7.61 X 7.34 X 4.69 MM
GRADING RESULTS	
Carat Weight	2.03 CARATS
Color Grade	F
Clarity Grade	VS 1



ADDITIONAL GRADING INFORMATION

Polish	EXCELLENT
Symmetry	EXCELLENT
Fluorescence	NONE
Inscription(s)	 LG623488821
Comments: As Grown - No indication of post-growth treatment.	
This Laboratory Grown Diamond was created by High Pressure High Temperature (HPHT) growth process.	
Type II	

February 28, 2024	218 CARATS	
GI Report No LG23488921	VS 1	
SQUARE CUSHION BRILLIANT	63.9%	
	60%	
7.61 X 7.34 X 4.49 MM	Medium to slightly Thick Faceted	
	Polished	
	EXCELLENT	
	EXCELLENT	
	NONE	
	g81 LG23488921	
Comments: 1. No indication of post-growth treatment.		
2. The Laboratory Grown Diamond was created by High Pressure High Temperature (HPHT) growth process.		
Type II		