



ELECTRONIC COPY

LABORATORY GROWN DIAMOND REPORT

LG623495358

Report verification at igi.org

**LABORATORY GROWN
DIAMOND REPORT**

LABORATORY GROWN DIAMOND REPORT

LABORATORY GROWN DIAMOND REPORT

March 4, 2024
 IGI Report Number **LG623495358**
 Description **LABORATORY GROWN
DIAMOND**
 Shape and Cutting Style **ROUND BRILLIANT**
 Measurements **6.64 - 6.71 X 4.02 MM**

GRADING RESULTS

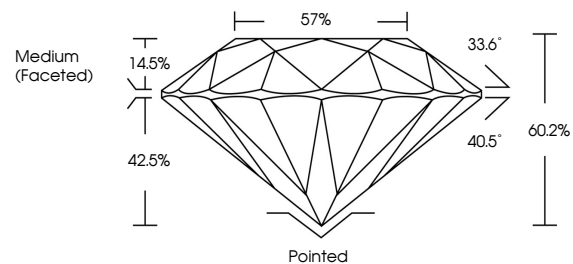
Carat Weight **1.08 CARAT**
 Color Grade **F**
 Clarity Grade **VVS 1**
 Cut Grade **IDEAL**

ADDITIONAL GRADING INFORMATION

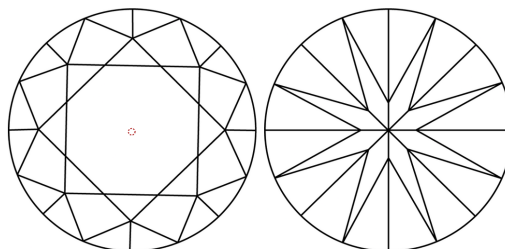
Polish **EXCELLENT**
 Symmetry **EXCELLENT**
 Fluorescence **NONE**
 Inscription(s) **LG623495358**

Comments: As Grown - No indication of post-growth treatment.
 This Laboratory Grown Diamond was created by High Pressure High Temperature (HPHT) growth process.
 Type II

PROPORTIONS



CLARITY CHARACTERISTICS



KEY TO SYMBOLS

Red symbols indicate internal characteristics.
 Green symbols indicate external characteristics.

GRADING SCALES

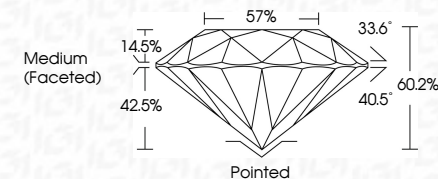
CLARITY

IF	VVS ¹⁻²	VS ¹⁻²	SI ¹⁻²	I ¹⁻³
Internally Flawless	Very Very Slightly Included	Very Slightly Included	Slightly Included	Included

COLOR

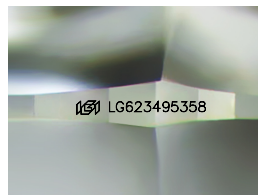
D	E	F	G	H	I	J	Faint	Very Light	Light
---	---	---	---	---	---	---	-------	------------	-------

March 4, 2024
 IGI Report Number **LG623495358**
 Description **LABORATORY GROWN
DIAMOND**
 Shape and Cutting Style **ROUND BRILLIANT**
 Measurements **6.64 - 6.71 X 4.02 MM**
GRADING RESULTS
 Carat Weight **1.08 CARAT**
 Color Grade **F**
 Clarity Grade **VVS 1**
 Cut Grade **IDEAL**



ADDITIONAL GRADING INFORMATION

Polish **EXCELLENT**
 Symmetry **EXCELLENT**
 Fluorescence **NONE**
 Inscription(s) **LG623495358**
 Comments: As Grown - No indication of post-growth treatment.
 This Laboratory Grown Diamond was created by High Pressure High Temperature (HPHT) growth process.
 Type II



Sample Image Used



March 4, 2024	IGI Report No LG623495358	1.08 CARAT	F
ROUND BRILLIANT	6.64 - 6.71 X 4.02 MM	VVS 1	IDEAL
Carat Weight	Color Grade	Clarity Grade	Cut Grade
1.08 CARAT	F	VVS 1	IDEAL
6.64 - 6.71 X 4.02 MM	60.2%	57%	Medium (Faceted)
Color Grade	Clarity Grade	Cut Grade	Grade
F	VVS 1	IDEAL	Medium (Faceted)
Clarity Grade	Depth	Table	Culet
VVS 1	60.2%	57%	Pointed
Cut Grade	Grade	Culet	Polish
IDEAL	Medium (Faceted)	Pointed	EXCELLENT
57%	Medium (Faceted)	Symmetry	EXCELLENT
Medium (Faceted)	Medium (Faceted)	Symmetry	EXCELLENT
Medium (Faceted)	Medium (Faceted)	Fluorescence	NONE
Medium (Faceted)	Medium (Faceted)	Inscription(s)	 LG623495358
Medium (Faceted)	Medium (Faceted)	Inscription(s)	 LG623495358
Medium (Faceted)	Medium (Faceted)	Comments:	As Grown - No indication of post-growth treatment. This Laboratory Grown Diamond was created by High Pressure High Temperature (HPHT) growth process. Type II