

**ELECTRONIC COPY**

## LABORATORY GROWN DIAMOND REPORT

|                         |                             |
|-------------------------|-----------------------------|
| February 28, 2024       |                             |
| IGI Report Number       | LG624400604                 |
| Description             | LABORATORY GROWN<br>DIAMOND |
| Shape and Cutting Style | SQUARE CUSHION BRILLIANT    |
| Measurements            | 6.90 X 6.59 X 4.26 MM       |

## GRADING RESULTS

|               |            |
|---------------|------------|
| Carat Weight  | 1.50 CARAT |
| Color Grade   | D          |
| Clarity Grade | VS 1       |

### ADDITIONAL GRADING INFORMATION

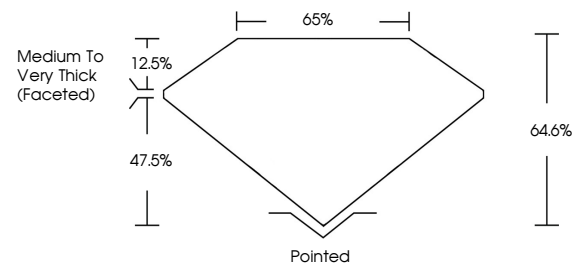
|                |   |
|----------------|---|
| Polish         | EXCELLENT   |
| Symmetry       | EXCELLENT   |
| Fluorescence   | NONE  |
| Inscription(s) |  LG624400604 |

Comments: As Grown - No indication of post-growth treatment.  
This Laboratory Grown Diamond was created by High Pressure High Temperature (HPHT) growth process.  
Type II

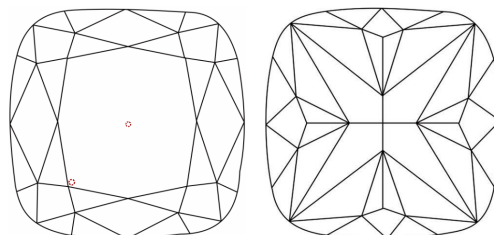
## LABORATORY GROWN DIAMOND REPORT

LG624400604  
Report verification at [igi.org](https://igi.org)

## PROPORTIONS



## CLARITY CHARACTERISTICS



## KEY TO SYMBOLS

Red symbols indicate internal characteristics.  
Green symbols indicate external characteristics.

LABORATORY GROWN  
DIAMOND REPORT

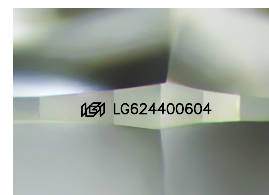
## GRADING SCALES

## CLARITY

| IF                     | VVS <sup>1-2</sup>             | VS <sup>1-2</sup>         | SI <sup>1-2</sup>    | I <sup>1-3</sup> |
|------------------------|--------------------------------|---------------------------|----------------------|------------------|
| Internally<br>Flawless | Very Very<br>Slightly Included | Very<br>Slightly Included | Slightly<br>Included | Included         |

**COLOR**

D E F G H I J Faint Very Light Light



Sample Image Used

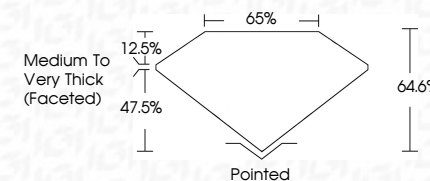


© IGI 2020, International Gemological Institute

FD - 10 20



|                         |                             |
|-------------------------|-----------------------------|
| February 28, 2024       |                             |
| IGI Report Number       | LG624400604                 |
| Description             | LABORATORY GROWN<br>DIAMOND |
| Shape and Cutting Style | SQUARE CUSHION BRILLIANT    |
| Measurements            | 6.90 X 6.59 X 4.26 MM       |
| <b>GRADING RESULTS</b>  |                             |
| Carat Weight            | 1.50 CARAT                  |
| Color Grade             | D                           |
| Clarity Grade           | VS 1                        |



### ADDITIONAL GRADING INFORMATION

|  |   |
|--|---|
| Polish   | EXCELLENT   |
| Symmetry   | EXCELLENT   |
| Fluorescence   | NONE  |
| Inscription(s)   |  LG624400604 |
| Comments: As Grown - No indication of post-growth treatment.                                       |   |
| This Laboratory Grown Diamond was created by High Pressure High Temperature (HPHT) growth process. |   |
| Type II  |   |

|                   |                         |                          |              |             |               |       |        |                                |          |           |           |              |                 |  |
|-------------------|-------------------------|--------------------------|--------------|-------------|---------------|-------|--------|--------------------------------|----------|-----------|-----------|--------------|-----------------|--|
| February 28, 2024 | GI Report No LG52400304 | SQUARE CUSHION BRILLIANT | 1.50 CARAT   | D           | VS 1          | 64.6% | 65%    | Medium to Very Thick (Faceted) | Polished | EXCELLENT | EXCELLENT | NONE         | ISS: LG52400304 | Comments: 1 - No indication of post-growth treatment.<br>The Laboratory Growth Diamond was created by High Pressure High Temperature (HPHT) growth process.<br>Type II |
|                   |                         | 5.90 X 6.90 X 4.26 MM    | Carat Weight | Color Grade | Clarity Grade | Depth | Girdle |                                | Quiet    | Polish    | Symmetry  | Fluorescence | Inscriptions(s) |  |