



**INTERNATIONAL  
GEMOLOGICAL  
INSTITUTE**

**ELECTRONIC COPY**

**LABORATORY GROWN  
DIAMOND REPORT**

**LG624401856**

**IGI LABORATORY GROWN  
DIAMOND ID REPORT**

March 9, 2024

IGI Report Number **LG624401856**

**SQUARE EMERALD CUT**

**5.22 X 5.21 X 3.55 MM**

Carat Weight	0.90 CARAT
Color Grade	E
Clarity Grade	VVS 2
Polish	EXCELLENT
Symmetry	EXCELLENT
Fluorescence	NONE
Inscription(s)	IGI LG624401856

Comments: As Grown - No indication of post-growth treatment. This Laboratory Grown Diamond was created by High Pressure High Temperature (HPHT) growth process. Type II

**LABORATORY GROWN DIAMOND REPORT**

**IGI LABORATORY GROWN DIAMOND IDENTIFICATION REPORT**

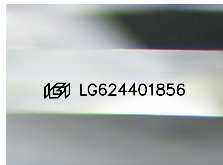
March 9, 2024

IGI Report Number **LG624401856**

Description **LABORATORY GROWN DIAMOND**

Shape and Cutting Style **SQUARE EMERALD CUT**

Measurements **5.22 X 5.21 X 3.55 MM**



Sample Image Used

**GRADING RESULTS**

Carat Weight **0.90 CARAT**

Color Grade **E**

Clarity Grade **VVS 2**

**ADDITIONAL GRADING INFORMATION**

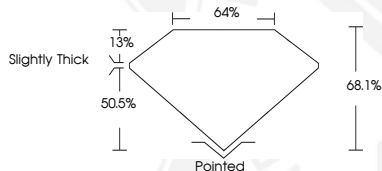
Polish **EXCELLENT**

Symmetry **EXCELLENT**

Fluorescence **NONE**

Inscription(s) **IGI LG624401856**

Comments: As Grown - No indication of post-growth treatment. This Laboratory Grown Diamond was created by High Pressure High Temperature (HPHT) growth process. Type II



**IGI LABORATORY GROWN  
DIAMOND ID REPORT**

March 9, 2024

IGI Report Number **LG624401856**

**SQUARE EMERALD CUT**

**5.22 X 5.21 X 3.55 MM**

Carat Weight	0.90 CARAT
Color Grade	E
Clarity Grade	VVS 2
Polish	EXCELLENT
Symmetry	EXCELLENT
Fluorescence	NONE
Inscription(s)	IGI LG624401856

Comments: As Grown - No indication of post-growth treatment. This Laboratory Grown Diamond was created by High Pressure High Temperature (HPHT) growth process. Type II

THIS DOCUMENT WAS PRODUCED WITH THE FOLLOWING SECURITY MEASURES: SPECIAL DOCUMENT PAPER, INK SCREENS, WATERMARK, BACKGROUND DESIGN, HOLOGRAM AND OTHER SECURITY FEATURES NOT LISTED AND DO EXCEED DOCUMENT SECURITY INDUSTRY GUIDELINES.

For terms & conditions and to verify this report, please visit [www.igi.org](http://www.igi.org)