



**INTERNATIONAL  
GEMOLOGICAL  
INSTITUTE**

**ELECTRONIC COPY**

**LABORATORY GROWN  
DIAMOND REPORT**

**LG624414020**

**IGI LABORATORY GROWN  
DIAMOND ID REPORT**

March 12, 2024  
IGI Report Number **LG624414020**  
**SQUARE CUSHION BRILLIANT**  
**4.63 X 4.59 X 3.15 MM**  
Carat Weight 0.53 CARAT  
Color Grade FANCY INTENSE PINK  
Clarity Grade VS 2  
Polish VERY GOOD  
Symmetry VERY GOOD  
Fluorescence SLIGHT  
Inscription(s) LG624414020

Comments: This Laboratory Grown Diamond was created by High Pressure High Temperature (HPHT) growth process. Indications of post-growth treatment.

**LABORATORY GROWN DIAMOND REPORT**

**IGI LABORATORY GROWN DIAMOND IDENTIFICATION REPORT**

March 12, 2024  
IGI Report Number LG624414020  
Description LABORATORY GROWN DIAMOND  
Shape and Cutting Style SQUARE CUSHION BRILLIANT  
Measurements 4.63 X 4.59 X 3.15 MM

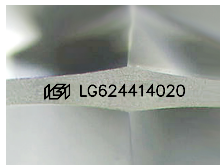
**GRADING RESULTS**

Carat Weight 0.53 CARAT  
Color Grade FANCY INTENSE PINK  
Clarity Grade VS 2

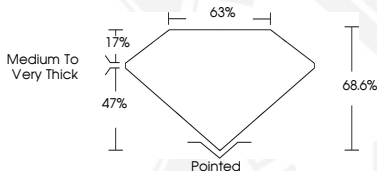
**ADDITIONAL GRADING INFORMATION**

Polish VERY GOOD  
Symmetry VERY GOOD  
Fluorescence SLIGHT  
Inscription(s) LG624414020

Comments: This Laboratory Grown Diamond was created by High Pressure High Temperature (HPHT) growth process. Indications of post-growth treatment.



Sample Image Used



**IGI LABORATORY GROWN  
DIAMOND ID REPORT**

March 12, 2024  
IGI Report Number **LG624414020**  
**SQUARE CUSHION BRILLIANT**  
**4.63 X 4.59 X 3.15 MM**  
Carat Weight 0.53 CARAT  
Color Grade FANCY INTENSE PINK  
Clarity Grade VS 2  
Polish VERY GOOD  
Symmetry VERY GOOD  
Fluorescence SLIGHT  
Inscription(s) LG624414020

Comments: This Laboratory Grown Diamond was created by High Pressure High Temperature (HPHT) growth process. Indications of post-growth treatment.



THIS DOCUMENT WAS PRODUCED WITH THE FOLLOWING SECURITY MEASURES: SPECIAL DOCUMENT PAPER, INK SCREENS, WATERMARK, BACKGROUND DESIGN, HOLOGRAM AND OTHER SECURITY FEATURES NOT LISTED AND DO EXCEED DOCUMENT SECURITY INDUSTRY GUIDELINES.

For terms & conditions and to verify this report, please visit [www.igi.org](http://www.igi.org)