



**ELECTRONIC COPY**

LG624434915  
Report verification at igi.org



May 6, 2024

IGI Report Number **LG624434915**

Description **LABORATORY GROWN DIAMOND**

Shape and Cutting Style **PRINCESS CUT**

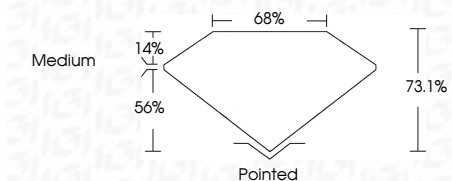
Measurements **6.84 X 6.76 X 4.94 MM**

**GRADING RESULTS**

Carat Weight **2.01 CARATS**

Color Grade **H**

Clarity Grade **VVS 2**



**ADDITIONAL GRADING INFORMATION**

Polish **EXCELLENT**

Symmetry **EXCELLENT**

Fluorescence **NONE**

Inscription(s) **IGI LG624434915**

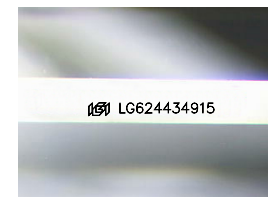
Comments: This Laboratory Grown Diamond was created by Chemical Vapor Deposition (CVD) growth process and may include post-growth treatment. Type IIa



**IGI**

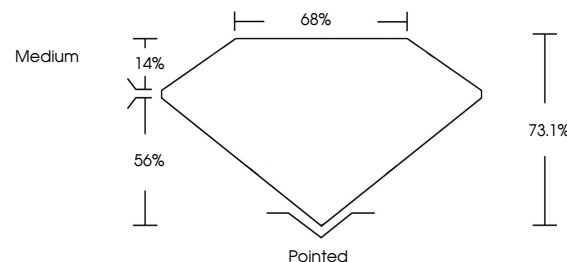
May 6, 2024	IGI Report No. LG624434915	2.01 CARATS	H
PRINCESS CUT	6.84 X 6.76 X 4.94 MM	VVS 2	73.1%
Color Grade	Medium	68%	
Clarity Grade	Pointed		
Table	EXCELLENT		
Girdle	EXCELLENT		
Culet	NONE		
Polish	EXCELLENT		
Symmetry	EXCELLENT		
Fluorescence	NONE		
Inscription(s)	IGI LG624434915		

Comments: This Laboratory Grown Diamond was created by Chemical Vapor Deposition (CVD) growth process and may include post-growth treatment. Type IIa

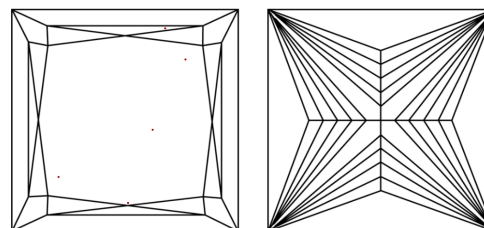


Sample Image Used

**PROPORTIONS**



**CLARITY CHARACTERISTICS**



**KEY TO SYMBOLS**

Red symbols indicate internal characteristics.  
Green symbols indicate external characteristics.

**COLOR**

D E F G H I J Faint Very Light Light

**CLARITY**

IF	VS <sup>1-2</sup>	VS <sup>1-2</sup>	SI <sup>1-2</sup>	I <sup>1-3</sup>
Internally Flawless	Very Very Slightly Included	Very Slightly Included	Slightly Included	Included

