



ELECTRONIC COPY

LABORATORY GROWN DIAMOND REPORT

March 7, 2024	
IGI Report Number	LG624443434
Description	LABORATORY GROWN DIAMOND
Shape and Cutting Style	MARQUISE BRILLIANT
Measurements	13.03 X 5.96 X 3.77 MM

GRADING RESULTS

Carat Weight	1.63 CARAT
Color Grade	E
Clarity Grade	SI 2

ADDITIONAL GRADING INFORMATION

Polish	EXCELLENT
Symmetry	EXCELLENT
Fluorescence	NONE
Inscription(s)	 LG624443434

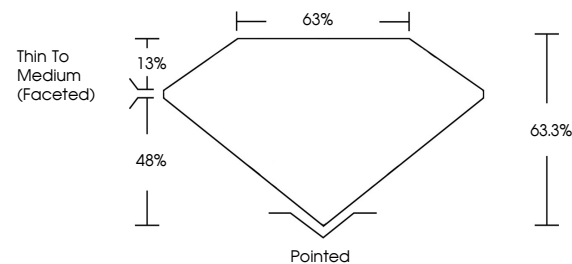
Comments: This Laboratory Grown Diamond was created by Chemical Vapor Deposition (CVD) growth process and may include post-growth treatment.
Type IIa

LABORATORY GROWN DIAMOND REPORT

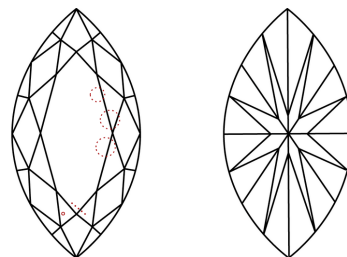
LG624443434

Report verification at igi.org

PROPORTIONS



CLARITY CHARACTERISTICS



KEY TO SYMBOLS

Red symbols indicate internal characteristics.
Green symbols indicate external characteristics.

LABORATORY GROWN
DIAMOND REPORT

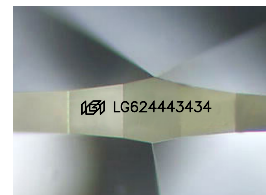
GRADING SCALES

CLARITY

IF	VVS ¹⁻²	VS ¹⁻²	SI ¹⁻²	I ¹⁻³
Internally Flawless	Very Very Slightly Included	Very Slightly Included	Slightly Included	Included

COLOR

D E F G H I J Faint Very Light Light



Sample Image Used

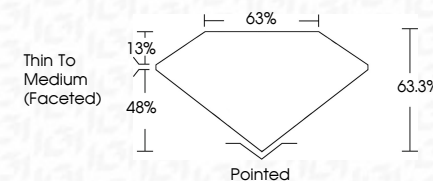


© IGI 2020, International Gemological Institute

FD - 10 20



March 7, 2024	
Report Number	LG624443434
Description	LABORATORY GROWN DIAMOND
Shape and Cutting Style	MARQUISE BRILLIANT
Measurements	13.03 X 5.96 X 3.77 MM
GRADING RESULTS	
Carat Weight	1.63 CARAT
Color Grade	E
Clarity Grade	SI 2



ADDITIONAL GRADING INFORMATION

Polish	EXCELLENT
Symmetry	EXCELLENT
Fluorescence	NONE
Inscription(s)	 LG624443434

Comments: This Laboratory Grown Diamond was created by Chemical Vapor Deposition (CVD) growth process and may include post-growth treatment.
Type IIa

March 7, 2024
GI Report No LG624443434
MARQUISE BRILLIANT

13.03 X 5.95 X 3.77 MM	1.63 CARAT	
Carat Weight		
Color Grade	S12	
Clarity Grade	63.3%	
Depth	65%	
Table	Thin To Medium	
Girdle	(Faceted)	
Culet	Pointed	
Polish	EXCELLENT	
Symmetry	EXCELLENT	
Fluorescence	NONE	
Measurements (mm)	13.03 X 5.95 X 3.77	

Comments:
This Laboratory Grown Diamond was created by Chemical Vapor Deposition (CVD) growth process and may include post-growth treatment.