



**ELECTRONIC COPY**

**LABORATORY GROWN DIAMOND REPORT**

**LG625405380**

Report verification at [igi.org](http://igi.org)

**LABORATORY GROWN  
DIAMOND REPORT**

**LABORATORY GROWN DIAMOND REPORT**

**LABORATORY GROWN DIAMOND REPORT**

April 19, 2024  
 IGI Report Number **LG625405380**  
 Description **LABORATORY GROWN DIAMOND**  
 Shape and Cutting Style **PRINCESS CUT**  
 Measurements **5.56 X 5.52 X 3.99 MM**

**GRADING RESULTS**

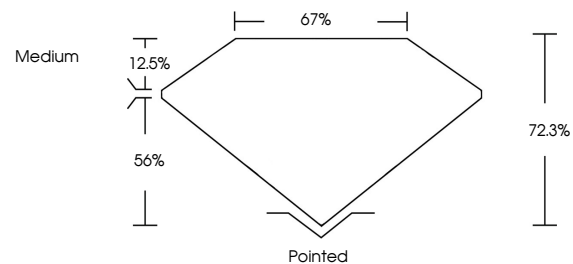
Carat Weight **1.08 CARAT**  
 Color Grade **D**  
 Clarity Grade **VVS 2**

**ADDITIONAL GRADING INFORMATION**

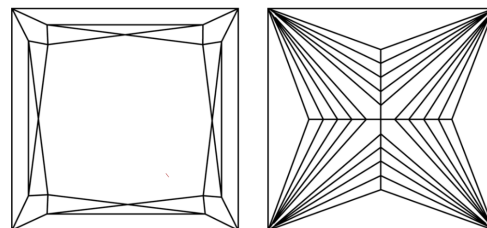
Polish **EXCELLENT**  
 Symmetry **EXCELLENT**  
 Fluorescence **NONE**  
 Inscription(s) **LG625405380**

Comments: As Grown - No indication of post-growth treatment.  
 This Laboratory Grown Diamond was created by High Pressure High Temperature (HPHT) growth process.  
 Type II

**PROPORTIONS**



**CLARITY CHARACTERISTICS**



**KEY TO SYMBOLS**

Red symbols indicate internal characteristics.  
 Green symbols indicate external characteristics.

**GRADING SCALES**

**CLARITY**

IF	VVS <sup>1-2</sup>	VS <sup>1-2</sup>	SI <sup>1-2</sup>	I <sup>1-3</sup>
Internally Flawless	Very Very Slightly Included	Very Slightly Included	Slightly Included	Included

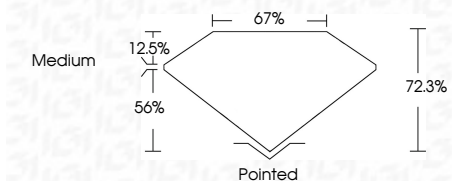
**COLOR**

D	E	F	G	H	I	J	Faint	Very Light	Light
---	---	---	---	---	---	---	-------	------------	-------

April 19, 2024  
 IGI Report Number **LG625405380**  
 Description **LABORATORY GROWN DIAMOND**  
 Shape and Cutting Style **PRINCESS CUT**  
 Measurements **5.56 X 5.52 X 3.99 MM**

**GRADING RESULTS**

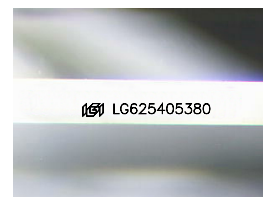
Carat Weight **1.08 CARAT**  
 Color Grade **D**  
 Clarity Grade **VVS 2**



**ADDITIONAL GRADING INFORMATION**

Polish **EXCELLENT**  
 Symmetry **EXCELLENT**  
 Fluorescence **NONE**  
 Inscription(s) **LG625405380**

Comments: As Grown - No indication of post-growth treatment.  
 This Laboratory Grown Diamond was created by High Pressure High Temperature (HPHT) growth process.  
 Type II



Sample Image Used



**IGI**

April 19, 2024  
 IGI Report No. **LG625405380**  
**PRINCESS CUT**

**1.08 CARAT**  
**D**  
**VVS 2**  
**72.3%**  
**67%**  
**Medium**  
**Pointed**  
**EXCELLENT**  
**EXCELLENT**  
**NONE**  
**LG625405380**

Comments: As Grown - No indication of post-growth treatment.  
 This Laboratory Grown Diamond was created by High Pressure High Temperature (HPHT) growth process.  
 Type II