



ELECTRONIC COPY

LG625420968
Report verification at igi.org

LABORATORY GROWN DIAMOND REPORT

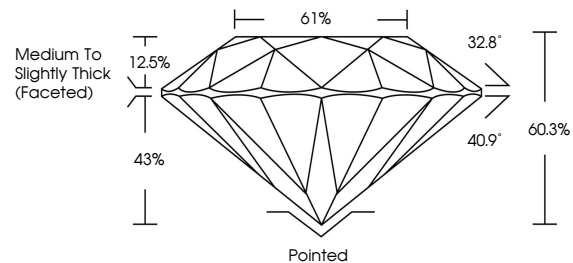
March 16, 2024
IGI Report Number **LG625420968**
Description **LABORATORY GROWN
DIAMOND**
Shape and Cutting Style **ROUND BRILLIANT**
Measurements **10.98 - 11.03 X 6.64 MM**
GRADING RESULTS
Carat Weight **5.01 CARATS**
Color Grade **G**
Clarity Grade **SI 1**
Cut Grade **EXCELLENT**

ADDITIONAL GRADING INFORMATION

Polish **EXCELLENT**
Symmetry **EXCELLENT**
Fluorescence **NONE**
Inscription(s) **IGI LG625420968**

Comments: This Laboratory Grown Diamond was created by Chemical Vapor Deposition (CVD) growth process and may include post-growth treatment. Type IIa

PROPORTIONS



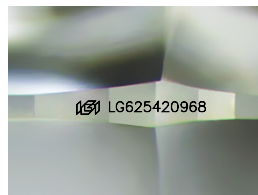
GRADING SCALES

CLARITY

IF	VVS ¹⁻²	VS ¹⁻²	SI ¹⁻²	I ¹⁻³
Internally Flawless	Very Very Slightly Included	Very Slightly Included	Slightly Included	Included

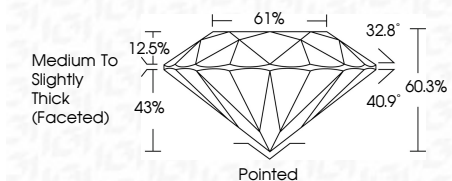
COLOR

D	E	F	G	H	I	J	Faint	Very Light	Light
---	---	---	---	---	---	---	-------	------------	-------



Sample Image Used

March 16, 2024
IGI Report Number **LG625420968**
Description **LABORATORY GROWN
DIAMOND**
Shape and Cutting Style **ROUND BRILLIANT**
Measurements **10.98 - 11.03 X 6.64 MM**
GRADING RESULTS
Carat Weight **5.01 CARATS**
Color Grade **G**
Clarity Grade **SI 1**
Cut Grade **EXCELLENT**



ADDITIONAL GRADING INFORMATION

Polish **EXCELLENT**
Symmetry **EXCELLENT**
Fluorescence **NONE**
Inscription(s) **IGI LG625420968**
Comments: This Laboratory Grown Diamond was created by Chemical Vapor Deposition (CVD) growth process and may include post-growth treatment. Type IIa



IGI



March 16, 2024
IGI Report No. **LG625420968**
ROUND BRILLIANT
Carat Weight **5.01 CARATS**
Color Grade **G**
Clarity Grade **SI 1**
Depth **EXCELLENT**
Table **60.3%**
Girdle **61%**
Culet **Medium To Slightly Thick (Faceted)**
Polish **Pointed**
Symmetry **EXCELLENT**
Fluorescence **EXCELLENT**
Inscriptions(s) **NONE**
IGI LG625420968
Comments: This Laboratory Grown Diamond was created by Chemical Vapor Deposition (CVD) growth process and may include post-growth treatment. Type IIa