



ELECTRONIC COPY

LABORATORY GROWN DIAMOND REPORT

March 18, 2024
 IGI Report Number **LG625423339**
 Description **LABORATORY GROWN
DIAMOND**
 Shape and Cutting Style **ROUND BRILLIANT**
 Measurements **9.87 - 9.89 X 5.89 MM**
GRADING RESULTS
 Carat Weight **3.52 CARATS**
 Color Grade **H**
 Clarity Grade **VS 1**
 Cut Grade **EXCELLENT**

ADDITIONAL GRADING INFORMATION

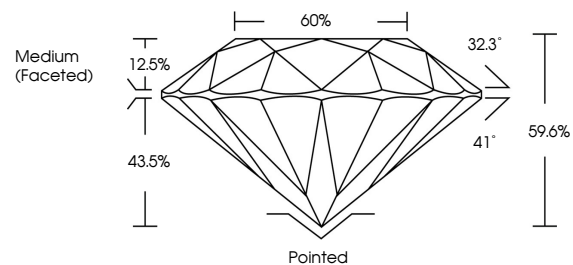
Polish **EXCELLENT**
 Symmetry **EXCELLENT**
 Fluorescence **NONE**
 Inscription(s) **LG625423339**

Comments: This Laboratory Grown Diamond was created by Chemical Vapor Deposition (CVD) growth process and may include post-growth treatment. Type IIa

LABORATORY GROWN DIAMOND REPORT

LG625423339
 Report verification at igi.org

PROPORTIONS



**LABORATORY GROWN
DIAMOND REPORT**

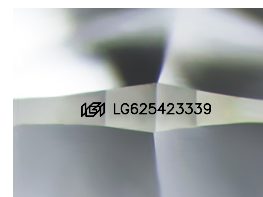
GRADING SCALES

CLARITY

IF	VVS ¹⁻²	VS ¹⁻²	SI ¹⁻²	I ¹⁻³
Internally Flawless	Very Very Slightly Included	Very Slightly Included	Slightly Included	Included

COLOR

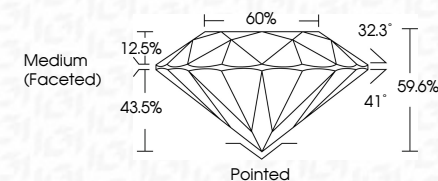
D	E	F	G	H	I	J	Faint	Very Light	Light
---	---	---	---	---	---	---	-------	------------	-------



Sample Image Used

LABORATORY GROWN DIAMOND REPORT

March 18, 2024
 IGI Report Number **LG625423339**
 Description **LABORATORY GROWN
DIAMOND**
 Shape and Cutting Style **ROUND BRILLIANT**
 Measurements **9.87 - 9.89 X 5.89 MM**
GRADING RESULTS
 Carat Weight **3.52 CARATS**
 Color Grade **H**
 Clarity Grade **VS 1**
 Cut Grade **EXCELLENT**



ADDITIONAL GRADING INFORMATION

Polish **EXCELLENT**
 Symmetry **EXCELLENT**
 Fluorescence **NONE**
 Inscription(s) **LG625423339**
 Comments: This Laboratory Grown Diamond was created by Chemical Vapor Deposition (CVD) growth process and may include post-growth treatment. Type IIa



IGI



March 18, 2024
 IGI Report No **LG625423339**
ROUND BRILLIANT
 Carat Weight **3.52 CARATS**
 Color Grade **H**
 Clarity Grade **VS 1**
 Depth **EXCELLENT**
 Table **60%**
 Girdle **Medium (Faceted)**
 Culet **Pointed**
 Polish **EXCELLENT**
 Symmetry **EXCELLENT**
 Fluorescence **NONE**
 Inscription(s) **IGI LG625423339**
 Comments: This Laboratory Grown Diamond was created by Chemical Vapor Deposition (CVD) growth process and may include post-growth treatment. Type IIa