



ELECTRONIC COPY

LABORATORY GROWN DIAMOND REPORT

LG625428141

Report verification at igi.org

LABORATORY GROWN DIAMOND REPORT

LABORATORY GROWN DIAMOND REPORT

LABORATORY GROWN DIAMOND REPORT

April 13, 2024
IGI Report Number LG625428141
Description LABORATORY GROWN DIAMOND
Shape and Cutting Style ROUND BRILLIANT
Measurements 9.32 - 9.35 X 5.74 MM

GRADING RESULTS

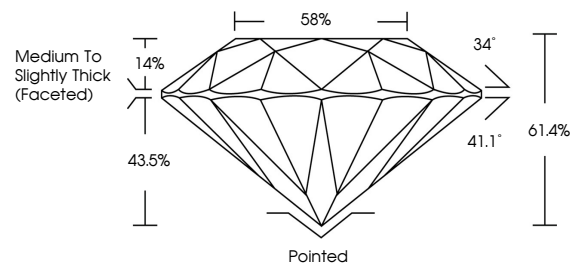
Carat Weight 3.08 CARATS
Color Grade D
Clarity Grade VS 2
Cut Grade IDEAL

ADDITIONAL GRADING INFORMATION

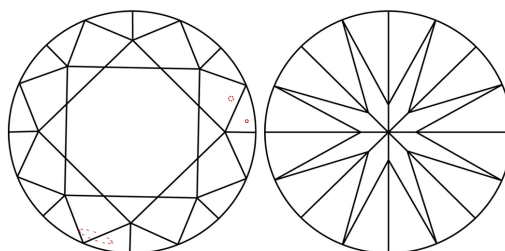
Polish EXCELLENT
Symmetry EXCELLENT
Fluorescence NONE
Inscription(s) IGI LG625428141

Comments: This Laboratory Grown Diamond was created by Chemical Vapor Deposition (CVD) growth process and may include post-growth treatment. Type IIa

PROPORTIONS



CLARITY CHARACTERISTICS



KEY TO SYMBOLS

Red symbols indicate internal characteristics.
Green symbols indicate external characteristics.

GRADING SCALES

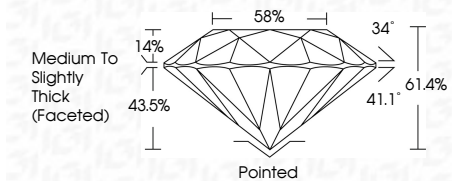
CLARITY

Table with 5 columns: IF, VVS 1-2, VS 1-2, SI 1-2, I 1-3. Row 1: Internally Flawless, Very Very Slightly Included, Very Slightly Included, Slightly Included, Included.

COLOR

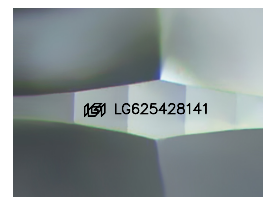
Table with 10 columns: D, E, F, G, H, I, J, Faint, Very Light, Light.

April 13, 2024
IGI Report Number LG625428141
Description LABORATORY GROWN DIAMOND
Shape and Cutting Style ROUND BRILLIANT
Measurements 9.32 - 9.35 X 5.74 MM
GRADING RESULTS
Carat Weight 3.08 CARATS
Color Grade D
Clarity Grade VS 2
Cut Grade IDEAL



ADDITIONAL GRADING INFORMATION

Polish EXCELLENT
Symmetry EXCELLENT
Fluorescence NONE
Inscription(s) IGI LG625428141
Comments: This Laboratory Grown Diamond was created by Chemical Vapor Deposition (CVD) growth process and may include post-growth treatment. Type IIa



Sample Image Used



Summary box containing report details: April 13, 2024, IGI Report No LG625428141, ROUND BRILLIANT, 9.32 - 9.35 X 5.74 MM, 3.08 CARATS, D, VS 2, IDEAL, 61.4%, 58%, Medium To Slightly Thick (Faceted), Pointed, EXCELLENT, EXCELLENT, NONE, IGI LG625428141. Includes comments on CVD growth process.



IGI