



ELECTRONIC COPY

LABORATORY GROWN DIAMOND REPORT

April 11, 2024	
IGI Report Number	LG625428377
Description	LABORATORY GROWN DIAMOND
Shape and Cutting Style	PRINCESS CUT
Measurements	7.95 X 7.80 X 5.10 MM

GRADING RESULTS

Carat Weight	2.81 CARATS
Color Grade	E
Clarity Grade	VS 2

ADDITIONAL GRADING INFORMATION

Polish	EXCELLENT
Symmetry	VERY GOOD
Fluorescence	NONE
Inscription(s)	 LG625428377

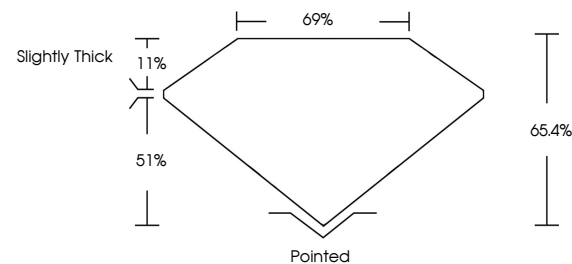
Comments: This Laboratory Grown Diamond was created by Chemical Vapor Deposition (CVD) growth process and may include post-growth treatment.
Type IIa

LABORATORY GROWN DIAMOND REPORT

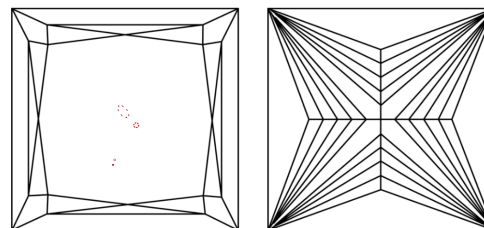
LG625428377

Report verification at igi.org

PROPORTIONS



CLARITY CHARACTERISTICS



KEY TO SYMBOLS

Red symbols indicate internal characteristics.
Green symbols indicate external characteristics.

LABORATORY GROWN
DIAMOND REPORT

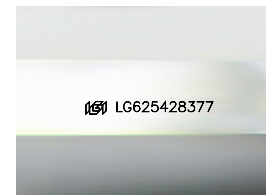
GRADING SCALES

CLARITY

IF	VVS ¹⁻²	VS ¹⁻²	SI ¹⁻²	I ¹⁻³
Internally Flawless	Very Very Slightly Included	Very Slightly Included	Slightly Included	Included

COLOR

D E F G H I J Faint Very Light Light



Sample Image Used

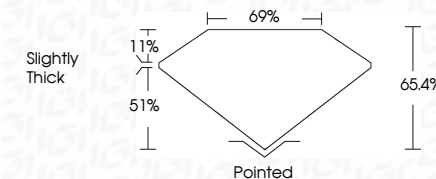


© IGI 2020, International Gemological Institute

FD - 10 20



April 11, 2024	
IGI Report Number	LG625428377
Description	LABORATORY GROWN DIAMOND
Shape and Cutting Style	PRINCESS CUT
Measurements	7.95 X 7.80 X 5.10 MM
GRADING RESULTS	
Carat Weight	2.81 CARATS
Color Grade	E
Clarity Grade	VS 2



ADDITIONAL GRADING INFORMATION

Polish	EXCELLENT
Symmetry	VERY GOOD
Fluorescence	NONE
Inscription(s)	1651 LG625428377

Comments: This Laboratory Grown Diamond was created by Chemical Vapor Deposition (CVD) growth process and may include post-growth treatment.
Type IIa

April 11, 2024
GI Report No LG625428377
PRINCESS CLIT

2.81 CARATS	VS 2	65.6%	69%	Slightly Thick	Pointed
1.95 X 7.80 X 5.10 MM	Carat Weight				EXCELLENT
	Color Grade				VERY GOOD
	Clarity Grade				NONE
	Depth				Fluorescence
	Table				Symmetry
	Girdle				Polish
					Culet

Comments:
This Laboratory Grown Diamond was created by Chemical Vapor Deposition (CVD) growth process and may include post-growth treatment.