



**ELECTRONIC COPY**

LG625445120

Report verification at [igi.org](http://igi.org)

**LABORATORY GROWN DIAMOND REPORT**

March 19, 2024  
IGI Report Number **LG625445120**

Description **LABORATORY GROWN  
DIAMOND**

Shape and Cutting Style **PRINCESS CUT**

Measurements **6.44 X 6.40 X 4.79 MM**

**GRADING RESULTS**

Carat Weight **1.82 CARAT**

Color Grade **H**

Clarity Grade **VS 1**

**ADDITIONAL GRADING INFORMATION**

Polish **EXCELLENT**

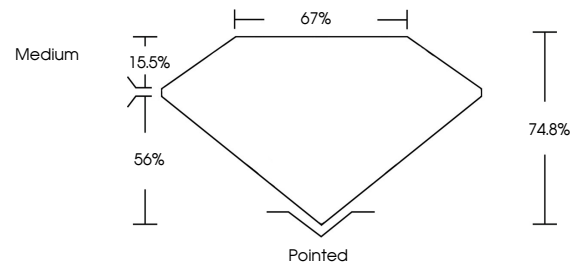
Symmetry **EXCELLENT**

Fluorescence **NONE**

Inscription(s) **IGI LG625445120**

Comments: This Laboratory Grown Diamond was created by Chemical Vapor Deposition (CVD) growth process and may include post-growth treatment. Type IIa

**PROPORTIONS**



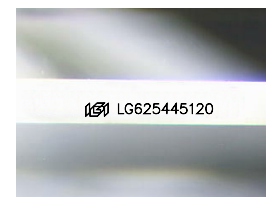
**GRADING SCALES**

**CLARITY**

IF	VVS <sup>1-2</sup>	VS <sup>1-2</sup>	SI <sup>1-2</sup>	I <sup>1-3</sup>
Internally Flawless	Very Very Slightly Included	Very Slightly Included	Slightly Included	Included

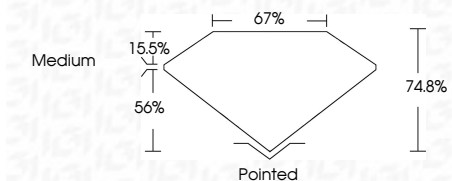
**COLOR**

D	E	F	G	H	I	J	Faint	Very Light	Light
---	---	---	---	---	---	---	-------	------------	-------



Sample Image Used

March 19, 2024  
IGI Report Number **LG625445120**  
Description **LABORATORY GROWN  
DIAMOND**  
Shape and Cutting Style **PRINCESS CUT**  
Measurements **6.44 X 6.40 X 4.79 MM**  
**GRADING RESULTS**  
Carat Weight **1.82 CARAT**  
Color Grade **H**  
Clarity Grade **VS 1**



**ADDITIONAL GRADING INFORMATION**

Polish **EXCELLENT**

Symmetry **EXCELLENT**

Fluorescence **NONE**

Inscription(s) **IGI LG625445120**

Comments: This Laboratory Grown Diamond was created by Chemical Vapor Deposition (CVD) growth process and may include post-growth treatment. Type IIa



**IGI**



March 19, 2024  
IGI Report No **LG625445120**  
**PRINCESS CUT**  
**6.44 X 6.40 X 4.79 MM**  
Carat Weight **1.82 CARAT**  
Color Grade **H**  
Clarity Grade **VS 1**  
Table **74.8%**  
Depth **56%**  
Girdle **67%**  
Medium  
Culet **Pointed**  
Polish **EXCELLENT**  
Symmetry **EXCELLENT**  
Fluorescence **NONE**  
Inscription(s) **IGI LG625445120**  
Comments: This Laboratory Grown Diamond was created by Chemical Vapor Deposition (CVD) growth process and may include post-growth treatment. Type IIa