

**ELECTRONIC COPY**

## LABORATORY GROWN DIAMOND REPORT

|                         |                             |
|-------------------------|-----------------------------|
| March 4, 2024           |                             |
| IGI Report Number       | LG625449458                 |
| Description             | LABORATORY GROWN<br>DIAMOND |
| Shape and Cutting Style | ROUND BRILLIANT             |
| Measurements            | 7.10 - 7.15 X 4.43 MM       |

## GRADING RESULTS

|               |            |
|---------------|------------|
| Carat Weight  | 1.37 CARAT |
| Color Grade   | D          |
| Clarity Grade | VS 1       |
| Cut Grade     | IDEAL      |

### ADDITIONAL GRADING INFORMATION

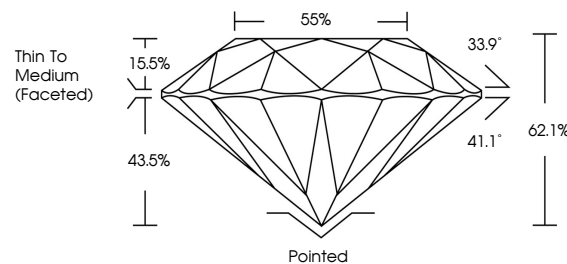
|                |                |
|----------------|----------------|
| Polish         | EXCELLENT      |
| Symmetry       | EXCELLENT      |
| Fluorescence   | NONE           |
| Inscription(s) | 15 LG625449458 |

Comments: As Grown - No indication of post-growth treatment.  
This Laboratory Grown Diamond was created by High Pressure High Temperature (HPHT) growth process.  
Type II

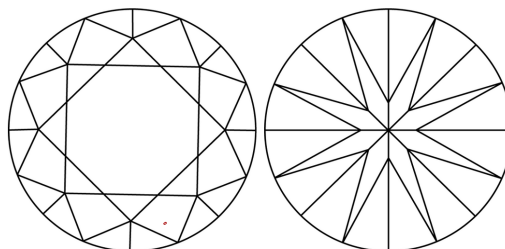
## LABORATORY GROWN DIAMOND REPORT

LG625449458  
Report verification at [lgi.org](https://lgi.org)

## PROPORTIONS



## CLARITY CHARACTERISTICS



## KEY TO SYMBOLS

Red symbols indicate internal characteristics.  
Green symbols indicate external characteristics.

LABORATORY GROWN  
DIAMOND REPORT

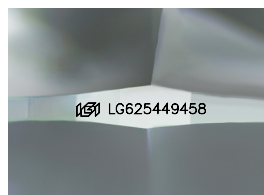
## GRADING SCALES

## CLARITY

| IF                  | VVS <sup>1-2</sup>          | VS <sup>1-2</sup>      | SI <sup>1-2</sup> | I <sup>1-3</sup> |
|---------------------|-----------------------------|------------------------|-------------------|------------------|
| Internally Flawless | Very Very Slightly Included | Very Slightly Included | Slightly Included | Included         |

**COLOR**

D E F G H I J Faint Very Light Light



Sample Image Used

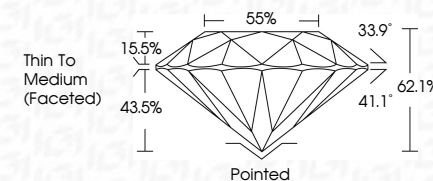


© IGI 2020, International Gemological Institute

FD - 10 20



|                         |                             |
|-------------------------|-----------------------------|
| March 4, 2024           |                             |
| IGI Report Number       | LG625449458                 |
| Description             | LABORATORY GROWN<br>DIAMOND |
| Shape and Cutting Style | ROUND BRILLIANT             |
| Measurements            | 7.10 - 7.15 X 4.43 MM       |
| GRADING RESULTS         |                             |
| Carat Weight            | 1.37 CARAT                  |
| Color Grade             | D                           |
| Clarity Grade           | VS 1                        |
| Cut Grade               | IDEAL                       |



### ADDITIONAL GRADING INFORMATION

|                                                                                                    |                            |
|----------------------------------------------------------------------------------------------------|----------------------------|
| Polish                                                                                             | EXCELLENT                  |
| Symmetry                                                                                           | EXCELLENT                  |
| Fluorescence                                                                                       | NONE                       |
| Inscription(s)                                                                                     | <del>(G)</del> LG625449458 |
| Comments: As Grown - No indication of post-growth treatment.                                       |                            |
| This Laboratory Grown Diamond was created by High Pressure High Temperature (HPHT) growth process. |                            |
| Type II                                                                                            |                            |

|                 |                          |  |
|-----------------|--------------------------|--|
| March 4, 2024   | GI Report No LG52544958  |  |
| ROUND BRILLIANT |                          |  |
| Weight          | 1.37 CARAT               |  |
| Color           | D                        |  |
| Clarity         | VS 1                     |  |
| Cut             | IDEAL                    |  |
| Depth           | 62.1%                    |  |
| Table           | 65%                      |  |
| Grades          | Thin To Medium (Faceted) |  |
| Culet           | Pointed                  |  |
| Polish          | EXCELLENT                |  |
| Symmetry        | EXCELLENT                |  |
| Fluorescence    | NONE                     |  |
| Inscription(s)  | 6891 LG52544958          |  |

Comments: As Grown - No indication of post-growth treatment  
This Laboratory Grown Diamond was created by High Pressure High Temperature (HPHT) growth process.