



# INTERNATIONAL GEMOLOGICAL INSTITUTE

ELECTRONIC COPY

## LABORATORY GROWN DIAMOND REPORT

LG625456478

### IGI LABORATORY GROWN DIAMOND ID REPORT

March 5, 2024

IGI Report Number **LG625456478**

#### OVAL BRILLIANT

**6.24 X 4.26 X 2.62 MM**

Carat Weight	0.44 CARAT
Color Grade	E
Clarity Grade	VVS 2
Polish	VERY GOOD
Symmetry	EXCELLENT
Fluorescence	NONE
Inscription(s)	IGI LG625456478

Comments: This Laboratory Grown Diamond was created by Chemical Vapor Deposition (CVD) growth process and may include post-growth treatment. Type IIa

## LABORATORY GROWN DIAMOND REPORT

### IGI LABORATORY GROWN DIAMOND IDENTIFICATION REPORT

March 5, 2024

IGI Report Number

LG625456478

Description

LABORATORY GROWN DIAMOND

Shape and Cutting Style

OVAL BRILLIANT

Measurements

6.24 X 4.26 X 2.62 MM

### GRADING RESULTS

Carat Weight 0.44 CARAT

Color Grade E

Clarity Grade VVS 2

### ADDITIONAL GRADING INFORMATION

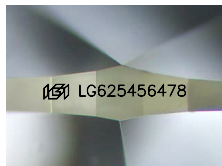
Polish VERY GOOD

Symmetry EXCELLENT

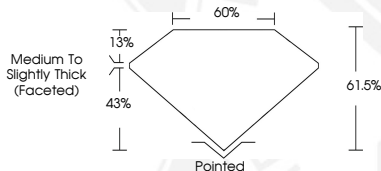
Fluorescence NONE

Inscription(s) IGI LG625456478

Comments: This Laboratory Grown Diamond was created by Chemical Vapor Deposition (CVD) growth process and may include post-growth treatment. Type IIa



Sample Image Used



### IGI LABORATORY GROWN DIAMOND ID REPORT

March 5, 2024

IGI Report Number **LG625456478**

#### OVAL BRILLIANT

**6.24 X 4.26 X 2.62 MM**

Carat Weight	0.44 CARAT
Color Grade	E
Clarity Grade	VVS 2
Polish	VERY GOOD
Symmetry	EXCELLENT
Fluorescence	NONE
Inscription(s)	IGI LG625456478

Comments: This Laboratory Grown Diamond was created by Chemical Vapor Deposition (CVD) growth process and may include post-growth treatment. Type IIa



THIS DOCUMENT WAS PRODUCED WITH THE FOLLOWING SECURITY MEASURES: SPECIAL DOCUMENT PAPER, INK SCREENS, WATERMARK, BACKGROUND DESIGN, HOLOGRAM AND OTHER SECURITY FEATURES NOT LISTED AND DO EXCEED DOCUMENT SECURITY INDUSTRY GUIDELINES.

For terms & conditions and to verify this report, please visit [www.igi.org](http://www.igi.org)