



**ELECTRONIC COPY**

**LABORATORY GROWN DIAMOND REPORT**

March 7, 2024  
 IGI Report Number **LG625458915**  
 Description **LABORATORY GROWN  
DIAMOND**  
 Shape and Cutting Style **CUT CORNERED RECTANGULAR  
MODIFIED BRILLIANT**  
 Measurements **9.58 X 6.69 X 4.46 MM**

**GRADING RESULTS**

Carat Weight **2.47 CARATS**  
 Color Grade **H**  
 Clarity Grade **SI 1**

**ADDITIONAL GRADING INFORMATION**

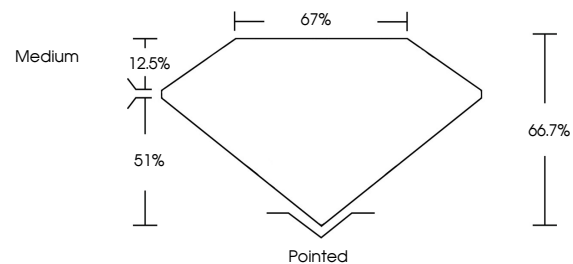
Polish **EXCELLENT**  
 Symmetry **EXCELLENT**  
 Fluorescence **NONE**  
 Inscription(s) **IGI LG625458915**

Comments: This Laboratory Grown Diamond was created by Chemical Vapor Deposition (CVD) growth process and may include post-growth treatment. Type IIa

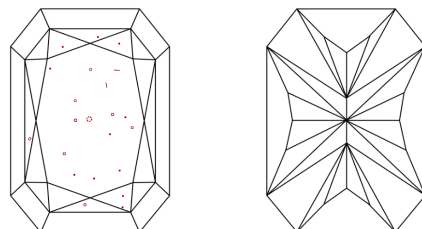
**LABORATORY GROWN DIAMOND REPORT**

**LG625458915**  
 Report verification at [igi.org](http://igi.org)

**PROPORTIONS**



**CLARITY CHARACTERISTICS**



**KEY TO SYMBOLS**

Red symbols indicate internal characteristics.  
 Green symbols indicate external characteristics.

**LABORATORY GROWN  
DIAMOND REPORT**

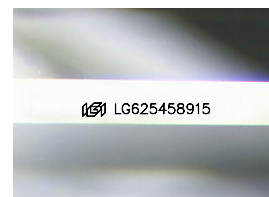
**GRADING SCALES**

**CLARITY**

IF	VVS <sup>1-2</sup>	VS <sup>1-2</sup>	SI <sup>1-2</sup>	I <sup>1-3</sup>
Internally Flawless	Very Very Slightly Included	Very Slightly Included	Slightly Included	Included

**COLOR**

D	E	F	G	H	I	J	Faint	Very Light	Light
---	---	---	---	---	---	---	-------	------------	-------



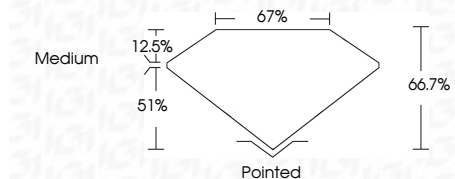
Sample Image Used

**LABORATORY GROWN DIAMOND REPORT**

March 7, 2024  
 IGI Report Number **LG625458915**  
 Description **LABORATORY GROWN  
DIAMOND**  
 Shape and Cutting Style **CUT CORNERED  
RECTANGULAR MODIFIED  
BRILLIANT**  
 Measurements **9.58 X 6.69 X 4.46 MM**

**GRADING RESULTS**

Carat Weight **2.47 CARATS**  
 Color Grade **H**  
 Clarity Grade **SI 1**



**ADDITIONAL GRADING INFORMATION**

Polish **EXCELLENT**  
 Symmetry **EXCELLENT**  
 Fluorescence **NONE**  
 Inscription(s) **IGI LG625458915**  
 Comments: This Laboratory Grown Diamond was created by Chemical Vapor Deposition (CVD) growth process and may include post-growth treatment. Type IIa



March 7, 2024  
 IGI Report No **LG625458915**  
**CUT CORNERED RECT. MODIFIED BRILLIANT**  
**9.58 X 6.69 X 4.46 MM**

Carat Weight	<b>2.47 CARATS</b>
Color Grade	<b>H</b>
Clarity Grade	<b>SI 1</b>
Depth	<b>66.7%</b>
Table	<b>67%</b>
Graile	<b>Medium</b>
Culet	<b>Pointed</b>
Polish	<b>EXCELLENT</b>
Symmetry	<b>EXCELLENT</b>
Fluorescence	<b>NONE</b>
Inscription(s)	<b>IGI LG625458915</b>

Comments: This Laboratory Grown Diamond was created by Chemical Vapor Deposition (CVD) growth process and may include post-growth treatment. Type IIa