



**INTERNATIONAL
GEMOLOGICAL
INSTITUTE**

ELECTRONIC COPY

**LABORATORY GROWN
DIAMOND REPORT**

LG625460728

**IGI LABORATORY GROWN
DIAMOND ID REPORT**

March 13, 2024

IGI Report Number **LG625460728**

CUSHION BRILLIANT

4.24 X 3.81 X 2.58 MM

Carat Weight 0.33 CARAT
Color Grade FANCY INTENSE PINK
Clarity Grade VVS 2
Polish VERY GOOD
Symmetry VERY GOOD
Fluorescence SLIGHT
Inscription(s) LG625460728

Comments: This Laboratory Grown Diamond was created by High Pressure High Temperature (HPHT) growth process. Indications of post-growth treatment.

LABORATORY GROWN DIAMOND REPORT

IGI LABORATORY GROWN DIAMOND IDENTIFICATION REPORT

March 13, 2024

IGI Report Number **LG625460728**

Description **LABORATORY GROWN DIAMOND**

Shape and Cutting Style **CUSHION BRILLIANT**

Measurements **4.24 X 3.81 X 2.58 MM**

GRADING RESULTS

Carat Weight 0.33 CARAT

Color Grade FANCY INTENSE PINK

Clarity Grade VVS 2

ADDITIONAL GRADING INFORMATION

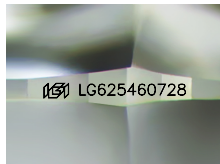
Polish VERY GOOD

Symmetry VERY GOOD

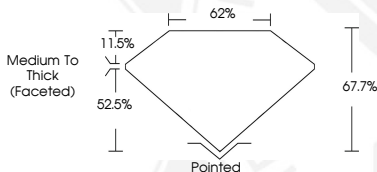
Fluorescence SLIGHT

Inscription(s) LG625460728

Comments: This Laboratory Grown Diamond was created by High Pressure High Temperature (HPHT) growth process. Indications of post-growth treatment.



Sample Image Used



**IGI LABORATORY GROWN
DIAMOND ID REPORT**

March 13, 2024

IGI Report Number **LG625460728**

CUSHION BRILLIANT

4.24 X 3.81 X 2.58 MM

Carat Weight 0.33 CARAT
Color Grade FANCY INTENSE PINK
Clarity Grade VVS 2
Polish VERY GOOD
Symmetry VERY GOOD
Fluorescence SLIGHT
Inscription(s) LG625460728

Comments: This Laboratory Grown Diamond was created by High Pressure High Temperature (HPHT) growth process. Indications of post-growth treatment.

THIS DOCUMENT WAS PRODUCED WITH THE FOLLOWING SECURITY MEASURES: SPECIAL DOCUMENT PAPER, INK SCREENS, WATERMARK, BACKGROUND DESIGN, HOLOGRAM AND OTHER SECURITY FEATURES NOT LISTED AND DO EXCEED DOCUMENT SECURITY INDUSTRY GUIDELINES.

For terms & conditions and to verify this report, please visit www.igi.org