



ELECTRONIC COPY

LG625474817

Report verification at igi.org

LABORATORY GROWN DIAMOND REPORT

March 16, 2024
 IGI Report Number **LG625474817**
 Description **LABORATORY GROWN
DIAMOND**
 Shape and Cutting Style **ROUND BRILLIANT**
 Measurements **9.87 - 9.91 X 5.75 MM**

GRADING RESULTS

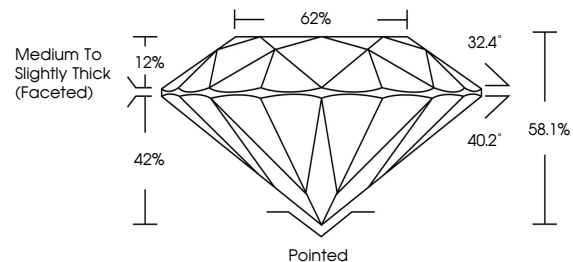
Carat Weight **3.50 CARATS**
 Color Grade **F**
 Clarity Grade **VS 2**
 Cut Grade **EXCELLENT**

ADDITIONAL GRADING INFORMATION

Polish **EXCELLENT**
 Symmetry **EXCELLENT**
 Fluorescence **NONE**
 Inscription(s) **IGI LG625474817**

Comments: This Laboratory Grown Diamond was created by Chemical Vapor Deposition (CVD) growth process and may include post-growth treatment. Type IIa

PROPORTIONS



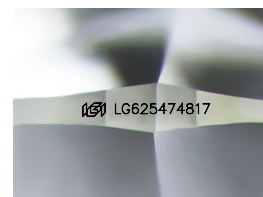
GRADING SCALES

CLARITY

IF	VVS ¹⁻²	VS ¹⁻²	SI ¹⁻²	I ¹⁻³
Internally Flawless	Very Very Slightly Included	Very Slightly Included	Slightly Included	Included

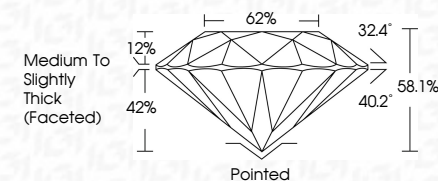
COLOR

D	E	F	G	H	I	J	Faint	Very Light	Light
---	---	---	---	---	---	---	-------	------------	-------



Sample Image Used

March 16, 2024
 IGI Report Number **LG625474817**
 Description **LABORATORY GROWN
DIAMOND**
 Shape and Cutting Style **ROUND BRILLIANT**
 Measurements **9.87 - 9.91 X 5.75 MM**
GRADING RESULTS
 Carat Weight **3.50 CARATS**
 Color Grade **F**
 Clarity Grade **VS 2**
 Cut Grade **EXCELLENT**



ADDITIONAL GRADING INFORMATION

Polish **EXCELLENT**
 Symmetry **EXCELLENT**
 Fluorescence **NONE**
 Inscription(s) **IGI LG625474817**
 Comments: This Laboratory Grown Diamond was created by Chemical Vapor Deposition (CVD) growth process and may include post-growth treatment. Type IIa



IGI



March 16, 2024
 IGI Report No LG625474817
ROUND BRILLIANT
 9.87 - 9.91 X 5.75 MM
 3.50 CARATS
 Carat Weight
 Color Grade **F**
 Clarity Grade **VS 2**
 Cut Grade **EXCELLENT**
 Depth **58.1%**
 Table **62%**
 Girdle **Medium To Slightly Thick (Faceted)**
 Culet **Pointed**
 Polish **EXCELLENT**
 Symmetry **EXCELLENT**
 Fluorescence **NONE**
 Inscription(s) **IGI LG625474817**
 Comments: This Laboratory Grown Diamond was created by Chemical Vapor Deposition (CVD) growth process and may include post-growth treatment. Type IIa