



**ELECTRONIC COPY**

**LABORATORY GROWN DIAMOND REPORT**

March 16, 2024  
IGI Report Number **LG625480314**  
Description **LABORATORY GROWN  
DIAMOND**  
Shape and Cutting Style **ROUND BRILLIANT**  
Measurements **7.41 - 7.48 X 4.39 MM**

**GRADING RESULTS**

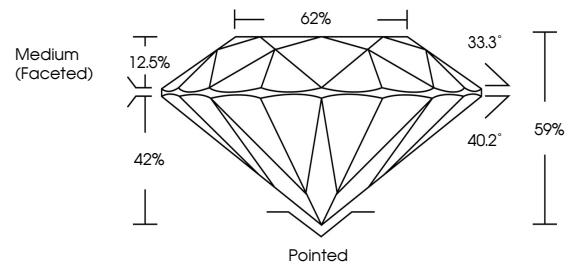
Carat Weight **1.50 CARAT**  
Color Grade **E**  
Clarity Grade **VS 1**  
Cut Grade **EXCELLENT**

**ADDITIONAL GRADING INFORMATION**

Polish **EXCELLENT**  
Symmetry **EXCELLENT**  
Fluorescence **NONE**  
Inscription(s) **IGI LG625480314**

Comments: This Laboratory Grown Diamond was created by Chemical Vapor Deposition (CVD) growth process and may include post-growth treatment. Type IIa

**PROPORTIONS**



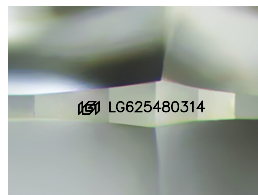
**GRADING SCALES**

**CLARITY**

IF	VVS <sup>1-2</sup>	VS <sup>1-2</sup>	SI <sup>1-2</sup>	I <sup>1-3</sup>
Internally Flawless	Very Very Slightly Included	Very Slightly Included	Slightly Included	Included

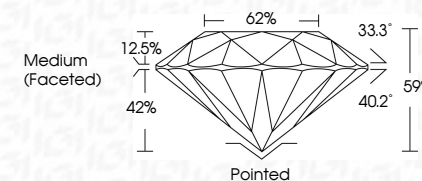
**COLOR**

D	E	F	G	H	I	J	Faint	Very Light	Light
---	---	---	---	---	---	---	-------	------------	-------



Sample Image Used

March 16, 2024  
IGI Report Number **LG625480314**  
Description **LABORATORY GROWN  
DIAMOND**  
Shape and Cutting Style **ROUND BRILLIANT**  
Measurements **7.41 - 7.48 X 4.39 MM**  
**GRADING RESULTS**  
Carat Weight **1.50 CARAT**  
Color Grade **E**  
Clarity Grade **VS 1**  
Cut Grade **EXCELLENT**



**ADDITIONAL GRADING INFORMATION**

Polish **EXCELLENT**  
Symmetry **EXCELLENT**  
Fluorescence **NONE**  
Inscription(s) **IGI LG625480314**  
Comments: This Laboratory Grown Diamond was created by Chemical Vapor Deposition (CVD) growth process and may include post-growth treatment. Type IIa



March 16, 2024  
IGI Report No LG625480314  
**ROUND BRILLIANT**

7.41 - 7.48 X 4.39 MM

1.50 CARAT  
Color Grade **E**  
Clarity Grade **VS 1**  
Depth **EXCELLENT**  
Table **62%**  
Girdle **Medium (Faceted)**

Culet **Pointed**  
Polish **EXCELLENT**  
Symmetry **EXCELLENT**  
Fluorescence **NONE**  
Inscriptions(s) **IGI LG625480314**

Comments: This Laboratory Grown Diamond was created by Chemical Vapor Deposition (CVD) growth process and may include post-growth treatment. Type IIa

