



ELECTRONIC COPY

LG625480389

Report verification at igi.org

LABORATORY GROWN DIAMOND REPORT

March 16, 2024
IGI Report Number LG625480389
Description LABORATORY GROWN DIAMOND
Shape and Cutting Style ROUND BRILLIANT
Measurements 8.75 - 8.81 X 5.34 MM

GRADING RESULTS

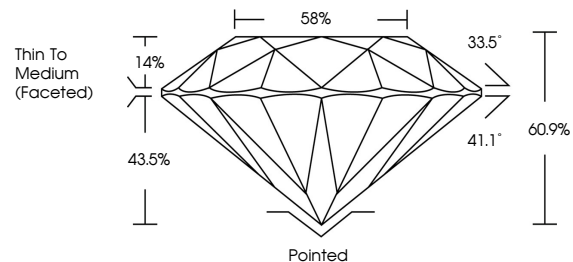
Carat Weight 2.52 CARATS
Color Grade G
Clarity Grade VS 1
Cut Grade IDEAL

ADDITIONAL GRADING INFORMATION

Polish EXCELLENT
Symmetry EXCELLENT
Fluorescence NONE
Inscription(s) IGI LG625480389

Comments: This Laboratory Grown Diamond was created by Chemical Vapor Deposition (CVD) growth process and may include post-growth treatment. Type IIa

PROPORTIONS



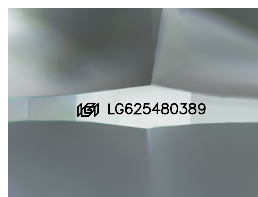
GRADING SCALES

CLARITY

Table with 5 columns: IF, VVS 1-2, VS 1-2, SI 1-2, I 1-3. Row 1: Internally Flawless, Very Very Slightly Included, Very Slightly Included, Slightly Included, Included.

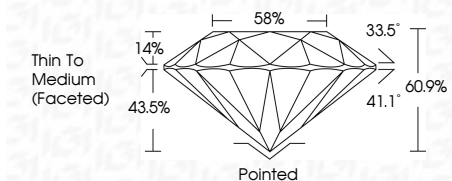
COLOR

Table with 11 columns: D, E, F, G, H, I, J, Faint, Very Light, Light.



Sample Image Used

March 16, 2024
IGI Report Number LG625480389
Description LABORATORY GROWN DIAMOND
Shape and Cutting Style ROUND BRILLIANT
Measurements 8.75 - 8.81 X 5.34 MM
GRADING RESULTS
Carat Weight 2.52 CARATS
Color Grade G
Clarity Grade VS 1
Cut Grade IDEAL



ADDITIONAL GRADING INFORMATION

Polish EXCELLENT
Symmetry EXCELLENT
Fluorescence NONE
Inscription(s) IGI LG625480389
Comments: This Laboratory Grown Diamond was created by Chemical Vapor Deposition (CVD) growth process and may include post-growth treatment. Type IIa



Summary table with columns: Date, Report No, Shape, Carat Weight, Color Grade, Clarity Grade, Depth, Table, Girdle, Thin To Medium (Faceted), Cutlet, Polish, Symmetry, Fluorescence, Inscription(s). Includes a QR code and a comment about CVD growth process.