



ELECTRONIC COPY

LG625480390

Report verification at igi.org

LABORATORY GROWN DIAMOND REPORT

March 16, 2024
 IGI Report Number **LG625480390**
 Description **LABORATORY GROWN
DIAMOND**
 Shape and Cutting Style **ROUND BRILLIANT**
 Measurements **8.75 - 8.80 X 5.32 MM**

GRADING RESULTS

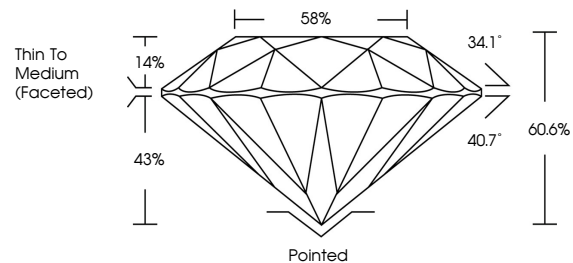
Carat Weight **2.50 CARATS**
 Color Grade **G**
 Clarity Grade **VVS 2**
 Cut Grade **IDEAL**

ADDITIONAL GRADING INFORMATION

Polish **EXCELLENT**
 Symmetry **EXCELLENT**
 Fluorescence **NONE**
 Inscription(s) **LG625480390**

Comments: This Laboratory Grown Diamond was created by Chemical Vapor Deposition (CVD) growth process and may include post-growth treatment. Type IIa

PROPORTIONS



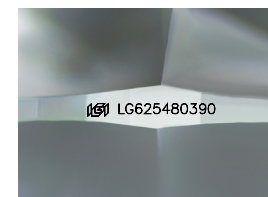
GRADING SCALES

CLARITY

IF	VVS ¹⁻²	VS ¹⁻²	SI ¹⁻²	I ¹⁻³
Internally Flawless	Very Very Slightly Included	Very Slightly Included	Slightly Included	Included

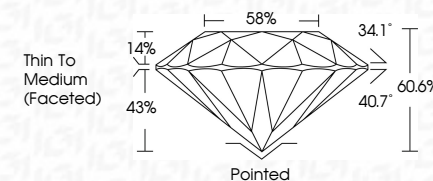
COLOR

D	E	F	G	H	I	J	Faint	Very Light	Light
---	---	---	---	---	---	---	-------	------------	-------



Sample Image Used

March 16, 2024
 IGI Report Number **LG625480390**
 Description **LABORATORY GROWN
DIAMOND**
 Shape and Cutting Style **ROUND BRILLIANT**
 Measurements **8.75 - 8.80 X 5.32 MM**
GRADING RESULTS
 Carat Weight **2.50 CARATS**
 Color Grade **G**
 Clarity Grade **VVS 2**
 Cut Grade **IDEAL**



ADDITIONAL GRADING INFORMATION

Polish **EXCELLENT**
 Symmetry **EXCELLENT**
 Fluorescence **NONE**
 Inscription(s) **LG625480390**
 Comments: This Laboratory Grown Diamond was created by Chemical Vapor Deposition (CVD) growth process and may include post-growth treatment. Type IIa



March 16, 2024
 IGI Report No LG625480390
ROUND BRILLIANT
 8.75 - 8.80 X 5.32 MM
 Carat Weight **2.50 CARATS**
 Color Grade **G**
 Clarity Grade **VVS 2**
 Cut Grade **IDEAL**
 Depth **60.6%**
 Table **14%**
 Girdle **43%**
 Thin To Medium (Faceted)
 Culet **Pointed**
 Polish **EXCELLENT**
 Symmetry **EXCELLENT**
 Fluorescence **NONE**
 Inscription(s) **LG625480390**

Comments: This Laboratory Grown Diamond was created by Chemical Vapor Deposition (CVD) growth process and may include post-growth treatment. Type IIa

