



ELECTRONIC COPY

LABORATORY GROWN DIAMOND REPORT

March 18, 2024
 IGI Report Number **LG625480494**
 Description **LABORATORY GROWN
DIAMOND**
 Shape and Cutting Style **PRINCESS CUT**
 Measurements **5.70 X 5.39 X 3.93 MM**
GRADING RESULTS
 Carat Weight **1.07 CARAT**
 Color Grade **G**
 Clarity Grade **VS 1**

ADDITIONAL GRADING INFORMATION

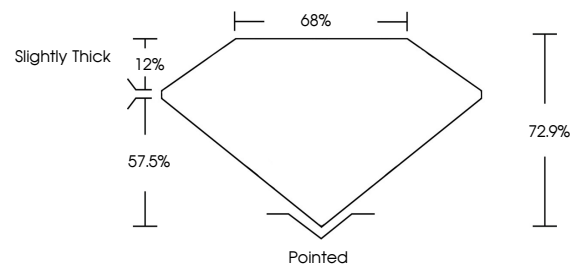
Polish **EXCELLENT**
 Symmetry **EXCELLENT**
 Fluorescence **NONE**
 Inscription(s) **IGI LG625480494**

Comments: This Laboratory Grown Diamond was created by Chemical Vapor Deposition (CVD) growth process and may include post-growth treatment. Type IIa

LABORATORY GROWN DIAMOND REPORT

LG625480494
 Report verification at igi.org

PROPORTIONS



**LABORATORY GROWN
DIAMOND REPORT**

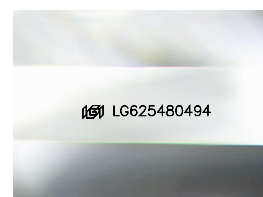
GRADING SCALES

CLARITY

IF	VVS ¹⁻²	VS ¹⁻²	SI ¹⁻²	I ¹⁻³
Internally Flawless	Very Very Slightly Included	Very Slightly Included	Slightly Included	Included

COLOR

D	E	F	G	H	I	J	Faint	Very Light	Light
---	---	---	---	---	---	---	-------	------------	-------



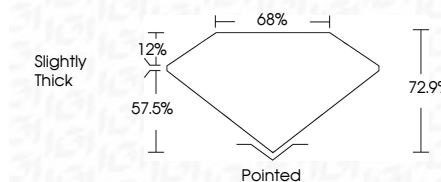
Sample Image Used

LABORATORY GROWN DIAMOND REPORT

March 18, 2024
 IGI Report Number **LG625480494**
 Description **LABORATORY GROWN
DIAMOND**
 Shape and Cutting Style **PRINCESS CUT**
 Measurements **5.70 X 5.39 X 3.93 MM**
GRADING RESULTS
 Carat Weight **1.07 CARAT**
 Color Grade **G**
 Clarity Grade **VS 1**

ADDITIONAL GRADING INFORMATION

Polish **EXCELLENT**
 Symmetry **EXCELLENT**
 Fluorescence **NONE**
 Inscription(s) **IGI LG625480494**
 Comments: This Laboratory Grown Diamond was created by Chemical Vapor Deposition (CVD) growth process and may include post-growth treatment. Type IIa



IGI

March 18, 2024
 IGI Report No **LG625480494**
PRINCESS CUT
 Carat Weight **1.07 CARAT**
 Color Grade **G**
 Clarity Grade **VS 1**
 Table **72.9%**
 Girdle **65%**
 Culet **Slightly Thick**
 Polish **Pointed**
 Symmetry **EXCELLENT**
 Fluorescence **EXCELLENT**
 Inscription(s) **NONE**
 IGI LG625480494

Comments: This Laboratory Grown Diamond was created by Chemical Vapor Deposition (CVD) growth process and may include post-growth treatment. Type IIa