



ELECTRONIC COPY

LABORATORY GROWN DIAMOND REPORT

March 21, 2024
 IGI Report Number **LG625480607**
 Description **LABORATORY GROWN
DIAMOND**
 Shape and Cutting Style **ROUND BRILLIANT**
 Measurements **7.86 - 7.88 X 4.82 MM**
GRADING RESULTS
 Carat Weight **1.85 CARAT**
 Color Grade **I**
 Clarity Grade **VVS 2**
 Cut Grade **IDEAL**

ADDITIONAL GRADING INFORMATION

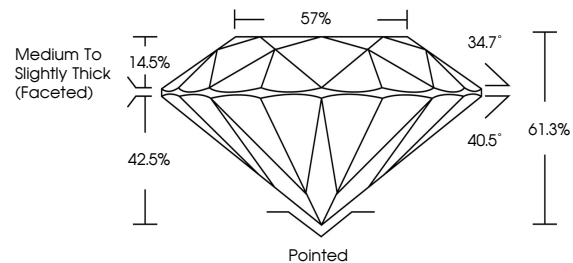
Polish **EXCELLENT**
 Symmetry **EXCELLENT**
 Fluorescence **NONE**
 Inscription(s) **IGI LG625480607**

Comments: This Laboratory Grown Diamond was created by Chemical Vapor Deposition (CVD) growth process and may include post-growth treatment. Type IIa

LG625480607

Report verification at igi.org

PROPORTIONS



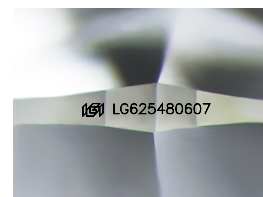
GRADING SCALES

CLARITY

IF	VVS ¹⁻²	VS ¹⁻²	SI ¹⁻²	I ¹⁻³
Internally Flawless	Very Very Slightly Included	Very Slightly Included	Slightly Included	Included

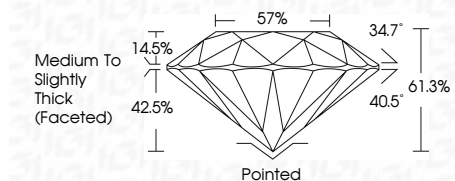
COLOR

D	E	F	G	H	I	J	Faint	Very Light	Light
---	---	---	---	---	---	---	-------	------------	-------



Sample Image Used

March 21, 2024
 IGI Report Number **LG625480607**
 Description **LABORATORY GROWN
DIAMOND**
 Shape and Cutting Style **ROUND BRILLIANT**
 Measurements **7.86 - 7.88 X 4.82 MM**
GRADING RESULTS
 Carat Weight **1.85 CARAT**
 Color Grade **I**
 Clarity Grade **VVS 2**
 Cut Grade **IDEAL**



ADDITIONAL GRADING INFORMATION

Polish **EXCELLENT**
 Symmetry **EXCELLENT**
 Fluorescence **NONE**
 Inscription(s) **IGI LG625480607**
 Comments: This Laboratory Grown Diamond was created by Chemical Vapor Deposition (CVD) growth process and may include post-growth treatment. Type IIa



IGI



March 21, 2024	IGI Report No LG625480607	ROUND BRILLIANT
7.86 - 7.88 X 4.82 MM	1.85 CARAT	I
Color Grade	VVS 2	IDEAL
Clarity Grade	IDEAL	61.3%
Cut Grade	57%	Medium To Slightly Thick (Faceted)
Table	Pointed	EXCELLENT
Girdle	EXCELLENT	EXCELLENT
Culet	NONE	NONE
Polish	EXCELLENT	IGI LG625480607
Symmetry	EXCELLENT	
Fluorescence	NONE	
Inscription(s)		

Comments: This Laboratory Grown Diamond was created by Chemical Vapor Deposition (CVD) growth process and may include post-growth treatment. Type IIa