



**INTERNATIONAL  
GEMOLOGICAL  
INSTITUTE**

**ELECTRONIC COPY**

**LABORATORY GROWN  
DIAMOND REPORT**

**LG625487425**

**IGI LABORATORY GROWN  
DIAMOND ID REPORT**

March 14, 2024

IGI Report Number **LG625487425**

**CUT CORNERED RECTANGULAR  
MODIFIED BRILLIANT**

**5.93 X 3.85 X 2.63 MM**

Carat Weight 0.56 CARAT  
Color Grade FANCY VIVID

YELLOW

Clarity Grade VVS 2

Polish VERY GOOD

Symmetry GOOD

Fluorescence NONE

Inscription(s) LG625487425

Comments: As Grown - No indication of post-growth treatment. This Laboratory Grown Diamond was created by High Pressure High Temperature (HPHT) growth process.

**LABORATORY GROWN DIAMOND REPORT**

**IGI LABORATORY GROWN DIAMOND IDENTIFICATION REPORT**

March 14, 2024

IGI Report Number LG625487425

Description LABORATORY GROWN DIAMOND  
Shape and Cutting Style CUT CORNERED RECTANGULAR MODIFIED  
BRILLIANT

Measurements 5.93 X 3.85 X 2.63 MM

**GRADING RESULTS**

Carat Weight 0.56 CARAT

Color Grade FANCY VIVID YELLOW

Clarity Grade VVS 2

**ADDITIONAL GRADING INFORMATION**

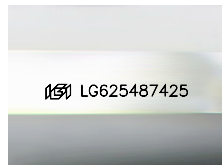
Polish VERY GOOD

Symmetry GOOD

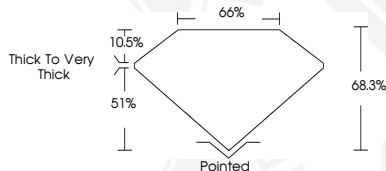
Fluorescence NONE

Inscription(s) LG625487425

Comments: As Grown - No indication of post-growth treatment. This Laboratory Grown Diamond was created by High Pressure High Temperature (HPHT) growth process.



Sample Image Used



**IGI LABORATORY GROWN  
DIAMOND ID REPORT**

March 14, 2024

IGI Report Number **LG625487425**

**CUT CORNERED RECTANGULAR  
MODIFIED BRILLIANT**

**5.93 X 3.85 X 2.63 MM**

Carat Weight 0.56 CARAT

Color Grade FANCY VIVID

YELLOW

Clarity Grade VVS 2

Polish VERY GOOD

Symmetry GOOD

Fluorescence NONE

Inscription(s) LG625487425

Comments: As Grown - No indication of post-growth treatment. This Laboratory Grown Diamond was created by High Pressure High Temperature (HPHT) growth process.

THIS DOCUMENT WAS PRODUCED WITH THE FOLLOWING SECURITY MEASURES: SPECIAL DOCUMENT PAPER, INK SCREENS, WATERMARK, BACKGROUND DESIGN, HOLOGRAM AND OTHER SECURITY FEATURES NOT LISTED AND DO EXCEED DOCUMENT SECURITY INDUSTRY GUIDELINES.

For terms & conditions and to verify this report, please visit [www.igi.org](http://www.igi.org)