



**ELECTRONIC COPY**

**LABORATORY GROWN DIAMOND REPORT**

March 14, 2024  
 IGI Report Number **LG625498528**  
 Description **LABORATORY GROWN  
DIAMOND**  
 Shape and Cutting Style **ROUND BRILLIANT**  
 Measurements **7.95 - 7.99 X 4.83 MM**  
**GRADING RESULTS**  
 Carat Weight **1.87 CARAT**  
 Color Grade **E**  
 Clarity Grade **VVS 1**  
 Cut Grade **IDEAL**

**ADDITIONAL GRADING INFORMATION**

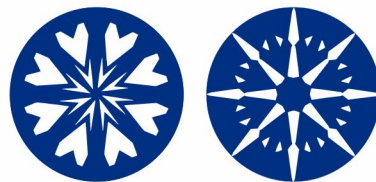
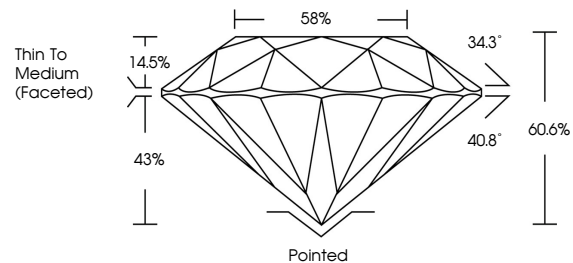
Polish **EXCELLENT**  
 Symmetry **EXCELLENT**  
 Fluorescence **NONE**  
 Inscription(s) **LG625498528**

Comments: HEARTS & ARROWS  
 This Laboratory Grown Diamond was created by  
 Chemical Vapor Deposition (CVD) growth process and  
 may include post-growth treatment.  
 Type IIa

**LABORATORY GROWN DIAMOND REPORT**

**LG625498528**  
 Report verification at [igi.org](http://igi.org)

**PROPORTIONS**



[www.igi.org](http://www.igi.org)

**LABORATORY GROWN  
DIAMOND REPORT**

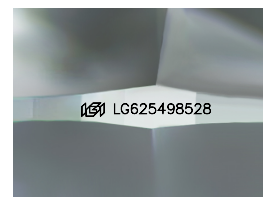
**GRADING SCALES**

**CLARITY**

IF	VVS <sup>1-2</sup>	VS <sup>1-2</sup>	SI <sup>1-2</sup>	I <sup>1-3</sup>
Internally Flawless	Very Very Slightly Included	Very Slightly Included	Slightly Included	Included

**COLOR**

D	E	F	G	H	I	J	Faint	Very Light	Light
---	---	---	---	---	---	---	-------	------------	-------



Sample Image Used

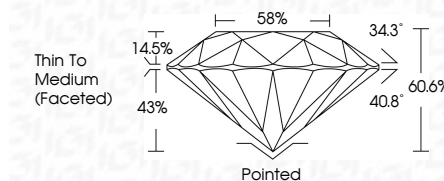
**LABORATORY GROWN DIAMOND REPORT**

March 14, 2024  
 IGI Report Number **LG625498528**  
 Description **LABORATORY GROWN  
DIAMOND**  
 Shape and Cutting Style **ROUND BRILLIANT**  
 Measurements **7.95 - 7.99 X 4.83 MM**  
**GRADING RESULTS**  
 Carat Weight **1.87 CARAT**  
 Color Grade **E**  
 Clarity Grade **VVS 1**  
 Cut Grade **IDEAL**

**ADDITIONAL GRADING INFORMATION**

Polish **EXCELLENT**  
 Symmetry **EXCELLENT**  
 Fluorescence **NONE**  
 Inscription(s) **LG625498528**

Comments: HEARTS & ARROWS  
 This Laboratory Grown Diamond was created by  
 Chemical Vapor Deposition (CVD) growth process and  
 may include post-growth treatment.  
 Type IIa



March 14, 2024  
 IGI Report No **LG625498528**  
**ROUND BRILLIANT**  
 Carat Weight **1.87 CARAT**  
 Color Grade **E**  
 Clarity Grade **VVS 1**  
 Cut Grade **IDEAL**  
 Depth **60.6%**  
 Table **58%**  
 Girdle **Thin To Medium (Faceted)**  
 Culet **Pointed**  
 Polish **EXCELLENT**  
 Symmetry **EXCELLENT**  
 Fluorescence **NONE**  
 Inscription(s) **LG625498528**

Comments: HEARTS & ARROWS  
 This Laboratory Grown Diamond was created by Chemical Vapor Deposition (CVD) growth process and may include post-growth treatment.  
 Type IIa