



ELECTRONIC COPY

LG626400835

Report verification at igi.org

LABORATORY GROWN DIAMOND REPORT

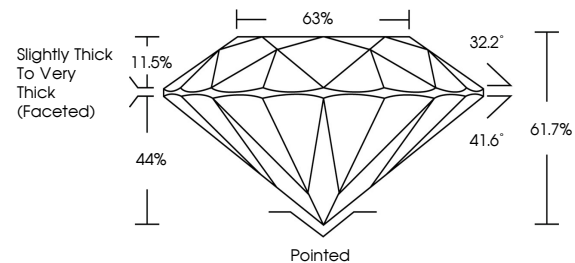
March 26, 2024
 IGI Report Number **LG626400835**
 Description **LABORATORY GROWN
DIAMOND**
 Shape and Cutting Style **ROUND BRILLIANT**
 Measurements **6.28 - 6.35 X 3.91 MM**
GRADING RESULTS
 Carat Weight **1.00 CARAT**
 Color Grade **G**
 Clarity Grade **SI 2**
 Cut Grade **GOOD**

ADDITIONAL GRADING INFORMATION

Polish **EXCELLENT**
 Symmetry **EXCELLENT**
 Fluorescence **NONE**
 Inscription(s) **IGI LG626400835**

Comments: This Laboratory Grown Diamond was created by Chemical Vapor Deposition (CVD) growth process and may include post-growth treatment. Type IIa

PROPORTIONS



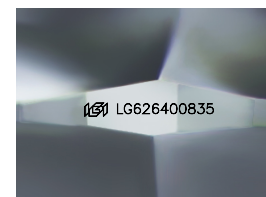
GRADING SCALES

CLARITY

IF	VVS ¹⁻²	VS ¹⁻²	SI ¹⁻²	I ¹⁻³
Internally Flawless	Very Very Slightly Included	Very Slightly Included	Slightly Included	Included

COLOR

D	E	F	G	H	I	J	Faint	Very Light	Light
---	---	---	---	---	---	---	-------	------------	-------

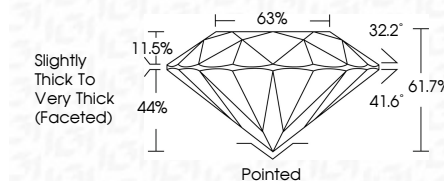


Sample Image Used

March 26, 2024
 IGI Report Number **LG626400835**
 Description **LABORATORY GROWN
DIAMOND**
 Shape and Cutting Style **ROUND BRILLIANT**
 Measurements **6.28 - 6.35 X 3.91 MM**
GRADING RESULTS
 Carat Weight **1.00 CARAT**
 Color Grade **G**
 Clarity Grade **SI 2**
 Cut Grade **GOOD**

ADDITIONAL GRADING INFORMATION

Polish **EXCELLENT**
 Symmetry **EXCELLENT**
 Fluorescence **NONE**
 Inscription(s) **IGI LG626400835**
 Comments: This Laboratory Grown Diamond was created by Chemical Vapor Deposition (CVD) growth process and may include post-growth treatment. Type IIa



IGI

March 26, 2024
 IGI Report No LG626400835
ROUND BRILLIANT
 Carat Weight **1.00 CARAT**
 Color Grade **G**
 Clarity Grade **SI 2**
 Cut Grade **GOOD**
 Depth **61.7%**
 Table **68%**
 Girdle **Slightly Thick to Very Thick (Faceted)**
 Culet **Pointed**
 Polish **EXCELLENT**
 Symmetry **EXCELLENT**
 Fluorescence **NONE**
 Inscription(s) **IGI LG626400835**

Comments: This Laboratory Grown Diamond was created by Chemical Vapor Deposition (CVD) growth process and may include post-growth treatment. Type IIa