



**INTERNATIONAL  
GEMOLOGICAL  
INSTITUTE**

**ELECTRONIC COPY**

**LABORATORY GROWN  
DIAMOND REPORT**

**LG626404937**

**IGI LABORATORY GROWN  
DIAMOND ID REPORT**

April 2, 2024

IGI Report Number **LG626404937**

**CUT CORNERED RECTANGULAR  
MODIFIED BRILLIANT  
5.79 X 3.90 X 2.69 MM**

Carat Weight 0.51 CARAT  
Color Grade D  
Clarity Grade IF.  
Polish EXCELLENT  
Symmetry EXCELLENT  
Fluorescence NONE  
Inscription(s) LG626404937

Comments: As Grown - No indication of post-growth treatment. This Laboratory Grown Diamond was created by High Pressure High Temperature (HPHT) growth process. Type II

**LABORATORY GROWN DIAMOND REPORT**

**IGI LABORATORY GROWN DIAMOND IDENTIFICATION REPORT**

April 2, 2024

IGI Report Number **LG626404937**

Description **LABORATORY GROWN DIAMOND**  
Shape and Cutting Style **CUT CORNERED RECTANGULAR MODIFIED  
BRILLIANT**

Measurements **5.79 X 3.90 X 2.69 MM**

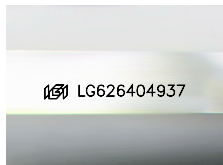
**GRADING RESULTS**

Carat Weight 0.51 CARAT  
Color Grade D  
Clarity Grade INTERNALLY FLAWLESS

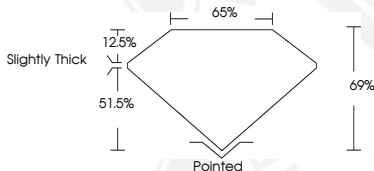
**ADDITIONAL GRADING INFORMATION**

Polish EXCELLENT  
Symmetry EXCELLENT  
Fluorescence NONE  
Inscription(s) LG626404937

Comments: As Grown - No indication of post-growth treatment. This Laboratory Grown Diamond was created by High Pressure High Temperature (HPHT) growth process. Type II



Sample Image Used



**IGI LABORATORY GROWN  
DIAMOND ID REPORT**

April 2, 2024

IGI Report Number **LG626404937**

**CUT CORNERED RECTANGULAR  
MODIFIED BRILLIANT  
5.79 X 3.90 X 2.69 MM**

Carat Weight 0.51 CARAT  
Color Grade D  
Clarity Grade IF.  
Polish EXCELLENT  
Symmetry EXCELLENT  
Fluorescence NONE  
Inscription(s) LG626404937

Comments: As Grown - No indication of post-growth treatment. This Laboratory Grown Diamond was created by High Pressure High Temperature (HPHT) growth process. Type II



THIS DOCUMENT WAS PRODUCED WITH THE FOLLOWING SECURITY MEASURES: SPECIAL DOCUMENT PAPER, INK SCREENS, WATERMARK, BACKGROUND DESIGN, HOLOGRAM AND OTHER SECURITY FEATURES NOT LISTED AND DO EXCEED DOCUMENT SECURITY INDUSTRY GUIDELINES.

For terms & conditions and to verify this report, please visit [www.igi.org](http://www.igi.org)