

**ELECTRONIC COPY**

## LABORATORY GROWN DIAMOND REPORT

March 26, 2024	
IGI Report Number	LG626416164
Description	LABORATORY GROWN DIAMOND
Shape and Cutting Style	ROUND BRILLIANT
Measurements	9.36 - 9.40 X 5.84 MM

## GRADING RESULTS

Carat Weight	3.19 CARATS
Color Grade	F
Clarity Grade	VS 2
Cut Grade	IDEAL

### ADDITIONAL GRADING INFORMATION

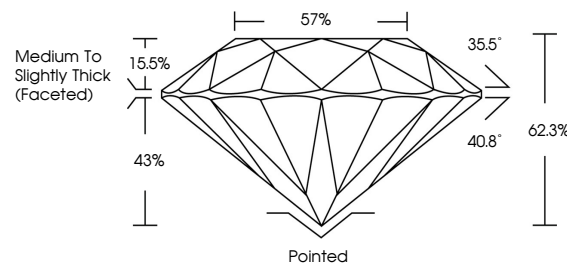
Polish	EXCELLENT
Symmetry	EXCELLENT
Fluorescence	NONE
Inscription(s)	15 LG626416164

Comments: This Laboratory Grown Diamond was created by Chemical Vapor Deposition (CVD) growth process and may include post-growth treatment.  
Type IIa

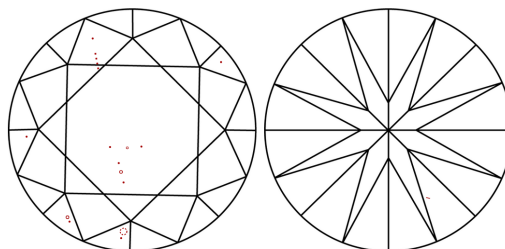
## LABORATORY GROWN DIAMOND REPORT

LG626416164  
Report verification at [igi.org](https://igi.org)

## PROPORTIONS



## CLARITY CHARACTERISTICS



## KEY TO SYMBOLS

Red symbols indicate internal characteristics.  
Green symbols indicate external characteristics.

LABORATORY GROWN  
DIAMOND REPORT

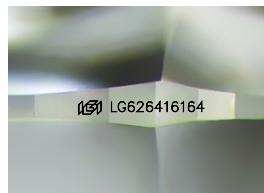
## GRADING SCALES

## CLARITY

IF	VVS <sup>1-2</sup>	VS <sup>1-2</sup>	SI <sup>1-2</sup>	I <sup>1-3</sup>
Internally Flawless	Very Very Slightly Included	Very Slightly Included	Slightly Included	Included

**COLOR**

D E F G H I J Faint Very Light Light



Sample Image Used



© IGI 2020, International Gemological Institute

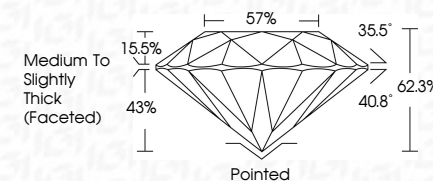
FD - 10 20

## LABORATORY GROWN DIAMOND REPORT

March 26, 2024	
IGI Report Number	LG626416164
Description	LABORATORY GROWN DIAMOND
Shape and Cutting Style	ROUND BRILLIANT
Measurements	9.36 - 9.40 X 5.84 MM

## GRADING RESULTS

Carat Weight	3.19 CARATS
Color Grade	F
Clarity Grade	VS 2
Cut Grade	IDEAL



### ADDITIONAL GRADING INFORMATION

Polish	EXCELLENT
Symmetry	EXCELLENT
Fluorescence	NONE
Inscription(s)	LG626416164

Comments: This Laboratory Grown Diamond was created by Chemical Vapor Deposition (CVD) growth process and may include post-growth treatment.  
Type IIa



March 26, 2024	G Report No. LG62416164	
ROUND BRILLANT		
3.19 CARATS		
F	VS 2	Poorly
	IDEAL	EXCELLENT
	62.3%	NONE
	57%	#61 LG62416164
	Medium to Slightly Thick (Faceted)	
		Cutlet
		Polish
		Symmetry
		Fluorescence
		Inscriptions(s)
		Comments:
		This Natural Color Diamond was treated by Chemical Vapor Deposition (CVD) growth process and may include post-growth treatment.
		Type IIA