



ELECTRONIC COPY

LABORATORY GROWN DIAMOND REPORT

April 4, 2024
 IGI Report Number **LG626428106**
 Description **LABORATORY GROWN
DIAMOND**
 Shape and Cutting Style **ROUND BRILLIANT**
 Measurements **9.00 - 9.05 X 5.47 MM**

GRADING RESULTS

Carat Weight **2.76 CARATS**
 Color Grade **F**
 Clarity Grade **VS 1**
 Cut Grade **IDEAL**

ADDITIONAL GRADING INFORMATION

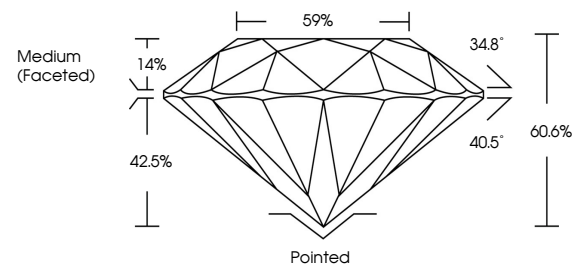
Polish **EXCELLENT**
 Symmetry **EXCELLENT**
 Fluorescence **NONE**
 Inscription(s) **IGI LG626428106**

Comments: This Laboratory Grown Diamond was created by Chemical Vapor Deposition (CVD) growth process and may include post-growth treatment. Type IIa

LABORATORY GROWN DIAMOND REPORT

LG626428106
 Report verification at igi.org

PROPORTIONS



**LABORATORY GROWN
DIAMOND REPORT**

GRADING SCALES

CLARITY

IF	VVS ¹⁻²	VS ¹⁻²	SI ¹⁻²	I ¹⁻³
Internally Flawless	Very Very Slightly Included	Very Slightly Included	Slightly Included	Included

COLOR

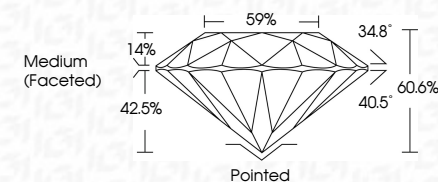
D	E	F	G	H	I	J	Faint	Very Light	Light
---	---	---	---	---	---	---	-------	------------	-------

LABORATORY GROWN DIAMOND REPORT

April 4, 2024
 IGI Report Number **LG626428106**
 Description **LABORATORY GROWN
DIAMOND**
 Shape and Cutting Style **ROUND BRILLIANT**
 Measurements **9.00 - 9.05 X 5.47 MM**

GRADING RESULTS

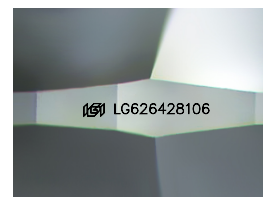
Carat Weight **2.76 CARATS**
 Color Grade **F**
 Clarity Grade **VS 1**
 Cut Grade **IDEAL**



ADDITIONAL GRADING INFORMATION

Polish **EXCELLENT**
 Symmetry **EXCELLENT**
 Fluorescence **NONE**
 Inscription(s) **IGI LG626428106**

Comments: This Laboratory Grown Diamond was created by Chemical Vapor Deposition (CVD) growth process and may include post-growth treatment. Type IIa



Sample Image Used



IGI

April 4, 2024	IGI Report No LG626428106	2.76 CARATS	F	VS 1	IDEAL	60.6%	59%	Medium (Faceted)	Pointed	EXCELLENT	EXCELLENT	NONE	IGI LG626428106
ROUND BRILLIANT	9.00 - 9.05 X 5.47 MM	Carat Weight	Color Grade	Clarity Grade	Cut Grade	Depth	Table	Girdle	Culet	Polish	Symmetry	Fluorescence	Inscription(s)

Comments: This Laboratory Grown Diamond was created by Chemical Vapor Deposition (CVD) growth process and may include post-growth treatment. Type IIa