



**INTERNATIONAL
GEMOLOGICAL
INSTITUTE**

ELECTRONIC COPY

**LABORATORY GROWN
DIAMOND REPORT**

LG626429763

**IGI LABORATORY GROWN
DIAMOND ID REPORT**

March 19, 2024

IGI Report Number **LG626429763**

**CUT CORNERED RECTANGULAR
MODIFIED BRILLIANT**

5.29 X 3.80 X 2.90 MM

Carat Weight 0.48 CARAT
Color Grade D
Clarity Grade VVS 1
Polish EXCELLENT
Symmetry VERY GOOD
Fluorescence NONE
Inscription(s) LG626429763

Comments: This Laboratory Grown Diamond was created by Chemical Vapor Deposition (CVD) growth process and may include post-growth treatment. Type Ila

LABORATORY GROWN DIAMOND REPORT

IGI LABORATORY GROWN DIAMOND IDENTIFICATION REPORT

March 19, 2024

IGI Report Number LG626429763

Description LABORATORY GROWN DIAMOND

Shape and Cutting Style CUT CORNERED RECTANGULAR MODIFIED BRILLIANT

Measurements 5.29 X 3.80 X 2.90 MM

GRADING RESULTS

Carat Weight 0.48 CARAT

Color Grade D

Clarity Grade VVS 1

ADDITIONAL GRADING INFORMATION

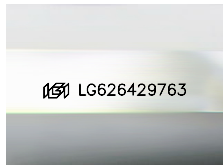
Polish EXCELLENT

Symmetry VERY GOOD

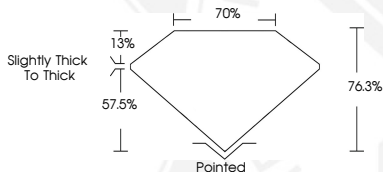
Fluorescence NONE

Inscription(s) LG626429763

Comments: This Laboratory Grown Diamond was created by Chemical Vapor Deposition (CVD) growth process and may include post-growth treatment. Type Ila



Sample Image Used



**IGI LABORATORY GROWN
DIAMOND ID REPORT**

March 19, 2024

IGI Report Number **LG626429763**

**CUT CORNERED RECTANGULAR
MODIFIED BRILLIANT**

5.29 X 3.80 X 2.90 MM

Carat Weight 0.48 CARAT
Color Grade D
Clarity Grade VVS 1
Polish EXCELLENT
Symmetry VERY GOOD
Fluorescence NONE
Inscription(s) LG626429763

Comments: This Laboratory Grown Diamond was created by Chemical Vapor Deposition (CVD) growth process and may include post-growth treatment. Type Ila

THIS DOCUMENT WAS PRODUCED WITH THE FOLLOWING SECURITY MEASURES: SPECIAL DOCUMENT PAPER, INK SCREENS, WATERMARK, BACKGROUND DESIGN, HOLOGRAM AND OTHER SECURITY FEATURES NOT LISTED AND DO EXCEED DOCUMENT SECURITY INDUSTRY GUIDELINES.

For terms & conditions and to verify this report, please visit www.igi.org