



**ELECTRONIC COPY**

**LABORATORY GROWN DIAMOND REPORT**

LG626431374

Report verification at [igi.org](http://igi.org)

**LABORATORY GROWN  
DIAMOND REPORT**

**LABORATORY GROWN DIAMOND REPORT**

**LABORATORY GROWN DIAMOND REPORT**

March 19, 2024  
 IGI Report Number **LG626431374**  
 Description **LABORATORY GROWN  
DIAMOND**  
 Shape and Cutting Style **ROUND BRILLIANT**  
 Measurements **7.51 - 7.56 X 4.61 MM**

**GRADING RESULTS**

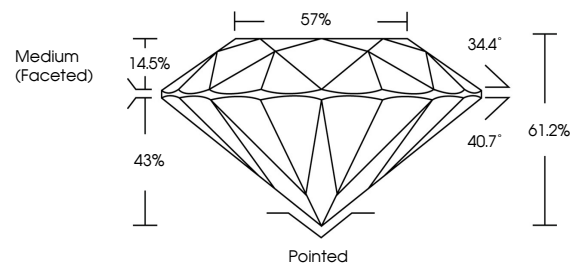
Carat Weight **1.61 CARAT**  
 Color Grade **E**  
 Clarity Grade **VVS 2**  
 Cut Grade **IDEAL**

**ADDITIONAL GRADING INFORMATION**

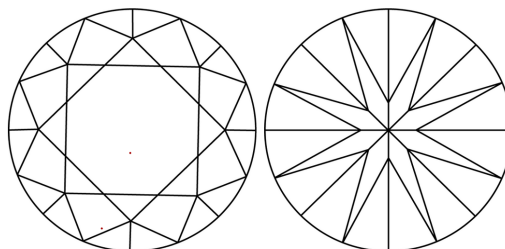
Polish **EXCELLENT**  
 Symmetry **EXCELLENT**  
 Fluorescence **NONE**  
 Inscription(s) **LG626431374**

Comments: HEARTS & ARROWS  
 This Laboratory Grown Diamond was created by  
 Chemical Vapor Deposition (CVD) growth process and  
 may include post-growth treatment.  
 Type IIa

**PROPORTIONS**



**CLARITY CHARACTERISTICS**



**KEY TO SYMBOLS**

Red symbols indicate internal characteristics.  
 Green symbols indicate external characteristics.



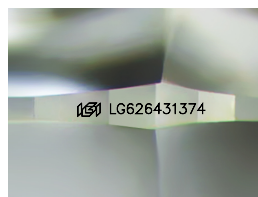
**GRADING SCALES**

**CLARITY**

IF	VVS <sup>1-2</sup>	VS <sup>1-2</sup>	SI <sup>1-2</sup>	I <sup>1-3</sup>
Internally Flawless	Very Very Slightly Included	Very Slightly Included	Slightly Included	Included

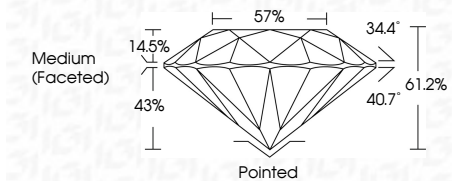
**COLOR**

D	E	F	G	H	I	J	Faint	Very Light	Light
---	---	---	---	---	---	---	-------	------------	-------



Sample Image Used

March 19, 2024  
 IGI Report Number **LG626431374**  
 Description **LABORATORY GROWN  
DIAMOND**  
 Shape and Cutting Style **ROUND BRILLIANT**  
 Measurements **7.51 - 7.56 X 4.61 MM**  
**GRADING RESULTS**  
 Carat Weight **1.61 CARAT**  
 Color Grade **E**  
 Clarity Grade **VVS 2**  
 Cut Grade **IDEAL**



**ADDITIONAL GRADING INFORMATION**

Polish **EXCELLENT**  
 Symmetry **EXCELLENT**  
 Fluorescence **NONE**  
 Inscription(s) **LG626431374**  
 Comments: HEARTS & ARROWS  
 This Laboratory Grown Diamond was created by  
 Chemical Vapor Deposition (CVD) growth process and  
 may include post-growth treatment.  
 Type IIa



March 19, 2024  
 IGI Report No **LG626431374**  
**ROUND BRILLIANT**  
 Carat Weight **1.61 CARAT**  
 Color Grade **E**  
 Clarity Grade **VVS 2**  
 Cut Grade **IDEAL**  
 Depth **61.2%**  
 Table **57%**  
 Girdle **Medium (Faceted)**  
 Culet **Pointed**  
 Polish **EXCELLENT**  
 Symmetry **EXCELLENT**  
 Fluorescence **NONE**  
 Inscription(s) **LG626431374**  
 Comments: HEARTS & ARROWS  
 This Laboratory Grown Diamond was  
 created by Chemical Vapor Deposition  
 (CVD) growth process and may include  
 post-growth treatment.  
 Type IIa

