



ELECTRONIC COPY

LABORATORY GROWN DIAMOND REPORT

LG626433461

Report verification at igi.org

LABORATORY GROWN
DIAMOND REPORT

LABORATORY GROWN DIAMOND REPORT

LABORATORY GROWN DIAMOND REPORT

April 10, 2024
IGI Report Number **LG626433461**
Description **LABORATORY GROWN
DIAMOND**
Shape and Cutting Style **CUSHION MODIFIED BRILLIANT**
Measurements **15.48 X 12.60 X 8.74 MM**

GRADING RESULTS

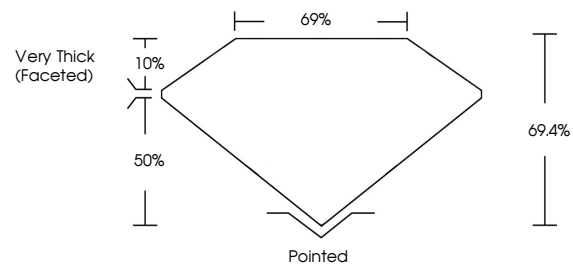
Carat Weight **18.24 CARATS**
Color Grade **FANCY GREYISH YELLOW**
Clarity Grade **VS 1**

ADDITIONAL GRADING INFORMATION

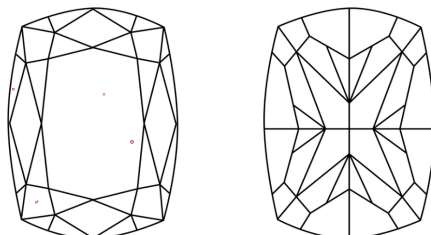
Polish **EXCELLENT**
Symmetry **EXCELLENT**
Fluorescence **NONE**
Inscription(s) **IGI LG626433461**

Comments: This Laboratory Grown Diamond was created by Chemical Vapor Deposition (CVD) growth process and may include post-growth treatment.

PROPORTIONS



CLARITY CHARACTERISTICS



KEY TO SYMBOLS

Red symbols indicate internal characteristics.
Green symbols indicate external characteristics.

GRADING SCALES

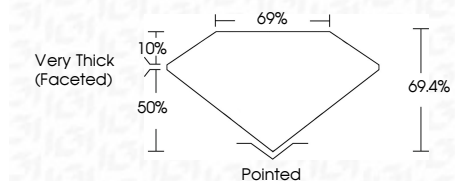
CLARITY

IF	VVS ¹⁻²	VS ¹⁻²	SI ¹⁻²	I ¹⁻³
Internally Flawless	Very Very Slightly Included	Very Slightly Included	Slightly Included	Included

COLOR

D	E	F	G	H	I	J	Faint	Very Light	Light
Light Tint	Fancy Light	Fancy	Fancy Intense	Fancy Vivid					

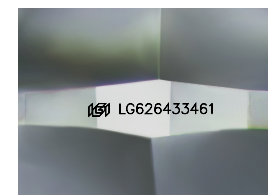
April 10, 2024
IGI Report Number **LG626433461**
Description **LABORATORY GROWN
DIAMOND**
Shape and Cutting Style **CUSHION MODIFIED
BRILLIANT**
Measurements **15.48 X 12.60 X 8.74 MM**
GRADING RESULTS
Carat Weight **18.24 CARATS**
Color Grade **FANCY GREYISH YELLOW**
Clarity Grade **VS 1**



ADDITIONAL GRADING INFORMATION

Polish **EXCELLENT**
Symmetry **EXCELLENT**
Fluorescence **NONE**
Inscription(s) **IGI LG626433461**

Comments: This Laboratory Grown Diamond was created by Chemical Vapor Deposition (CVD) growth process and may include post-growth treatment.



Sample Image Used



IGI

April 10, 2024
IGI Report No **LG626433461**
CUSHION MODIFIED BRILLIANT

18.24 CARATS
FANCY GREYISH YELLOW
VS 1
69.4%
69%
Very Thick (Faceted)
Pointed
EXCELLENT
EXCELLENT
NONE
IGI LG626433461

Comments: This Laboratory Grown Diamond was created by Chemical Vapor Deposition (CVD) growth process and may include post-growth treatment.