



**INTERNATIONAL  
GEMOLOGICAL  
INSTITUTE**

**ELECTRONIC COPY**

**LABORATORY GROWN  
DIAMOND REPORT**

**LG626472398**

**IGI LABORATORY GROWN  
DIAMOND ID REPORT**

March 22, 2024  
IGI Report Number **LG626472398**  
**PRINCESS CUT**  
**4.14 X 4.09 X 3.01 MM**  
Carat Weight 0.46 CARAT  
Color Grade D  
Clarity Grade VS 1  
Polish VERY GOOD  
Symmetry GOOD  
Fluorescence NONE  
Inscription(s) LG626472398

Comments: As Grown - No indication of post-growth treatment. This Laboratory Grown Diamond was created by High Pressure High Temperature (HPHT) growth process. Type II

**LABORATORY GROWN DIAMOND REPORT**

**IGI LABORATORY GROWN DIAMOND IDENTIFICATION REPORT**

March 22, 2024  
IGI Report Number LG626472398  
Description LABORATORY GROWN DIAMOND  
Shape and Cutting Style PRINCESS CUT  
Measurements 4.14 X 4.09 X 3.01 MM

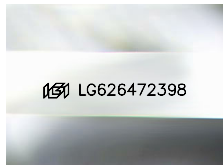
**GRADING RESULTS**

Carat Weight 0.46 CARAT  
Color Grade D  
Clarity Grade VS 1

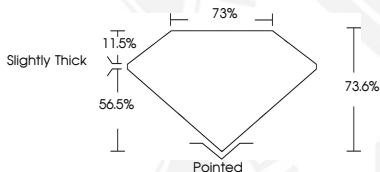
**ADDITIONAL GRADING INFORMATION**

Polish VERY GOOD  
Symmetry GOOD  
Fluorescence NONE  
Inscription(s) LG626472398

Comments: As Grown - No indication of post-growth treatment. This Laboratory Grown Diamond was created by High Pressure High Temperature (HPHT) growth process. Type II



Sample Image Used



**IGI LABORATORY GROWN  
DIAMOND ID REPORT**

March 22, 2024  
IGI Report Number **LG626472398**  
**PRINCESS CUT**  
**4.14 X 4.09 X 3.01 MM**  
Carat Weight 0.46 CARAT  
Color Grade D  
Clarity Grade VS 1  
Polish VERY GOOD  
Symmetry GOOD  
Fluorescence NONE  
Inscription(s) LG626472398

Comments: As Grown - No indication of post-growth treatment. This Laboratory Grown Diamond was created by High Pressure High Temperature (HPHT) growth process. Type II

THIS DOCUMENT WAS PRODUCED WITH THE FOLLOWING SECURITY MEASURES: SPECIAL DOCUMENT PAPER, INK SCREENS, WATERMARK, BACKGROUND DESIGN, HOLOGRAM AND OTHER SECURITY FEATURES NOT LISTED AND DO EXCEED DOCUMENT SECURITY INDUSTRY GUIDELINES.

For terms & conditions and to verify this report, please visit [www.igi.org](http://www.igi.org)