



**ELECTRONIC COPY**

**LABORATORY GROWN DIAMOND REPORT**

March 18, 2024  
 IGI Report Number **LG626476242**  
 Description **LABORATORY GROWN  
DIAMOND**  
 Shape and Cutting Style **ROUND BRILLIANT**  
 Measurements **10.44 - 10.48 X 6.37 MM**

**GRADING RESULTS**

Carat Weight **4.29 CARATS**  
 Color Grade **F**  
 Clarity Grade **VS 1**  
 Cut Grade **IDEAL**

**ADDITIONAL GRADING INFORMATION**

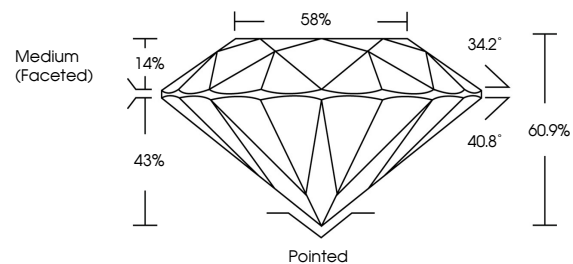
Polish **EXCELLENT**  
 Symmetry **EXCELLENT**  
 Fluorescence **NONE**  
 Inscription(s) **IGI LG626476242**

Comments: This Laboratory Grown Diamond was created by Chemical Vapor Deposition (CVD) growth process and may include post-growth treatment. Type IIa

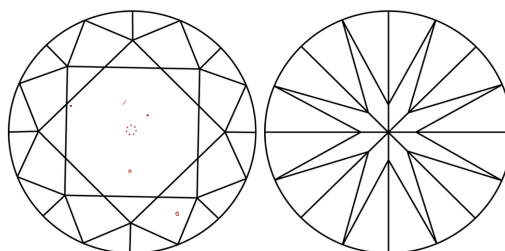
**LABORATORY GROWN DIAMOND REPORT**

**LG626476242**  
 Report verification at [igi.org](http://igi.org)

**PROPORTIONS**



**CLARITY CHARACTERISTICS**



**KEY TO SYMBOLS**

Red symbols indicate internal characteristics.  
 Green symbols indicate external characteristics.

**LABORATORY GROWN  
DIAMOND REPORT**

**GRADING SCALES**

**CLARITY**

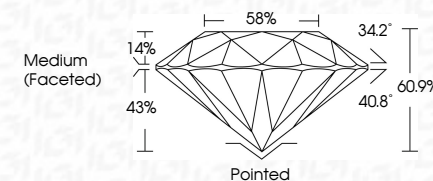
| IF                  | VVS <sup>1-2</sup>          | VS <sup>1-2</sup>      | SI <sup>1-2</sup> | I <sup>1-3</sup> |
|---------------------|-----------------------------|------------------------|-------------------|------------------|
| Internally Flawless | Very Very Slightly Included | Very Slightly Included | Slightly Included | Included         |

**COLOR**

| D | E | F | G | H | I | J | Faint | Very Light | Light |
|---|---|---|---|---|---|---|-------|------------|-------|
|---|---|---|---|---|---|---|-------|------------|-------|

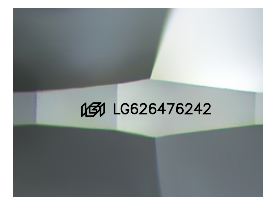
**LABORATORY GROWN DIAMOND REPORT**

March 18, 2024  
 IGI Report Number **LG626476242**  
 Description **LABORATORY GROWN  
DIAMOND**  
 Shape and Cutting Style **ROUND BRILLIANT**  
 Measurements **10.44 - 10.48 X 6.37 MM**  
**GRADING RESULTS**  
 Carat Weight **4.29 CARATS**  
 Color Grade **F**  
 Clarity Grade **VS 1**  
 Cut Grade **IDEAL**



**ADDITIONAL GRADING INFORMATION**

Polish **EXCELLENT**  
 Symmetry **EXCELLENT**  
 Fluorescence **NONE**  
 Inscription(s) **IGI LG626476242**  
 Comments: This Laboratory Grown Diamond was created by Chemical Vapor Deposition (CVD) growth process and may include post-growth treatment. Type IIa



Sample Image Used



**IGI**

March 18, 2024  
 IGI Report No **LG626476242**  
**ROUND BRILLIANT**  
 10.44 - 10.48 X 6.37 MM  
 4.29 CARATS  
 Color Grade **F**  
 Clarity Grade **VS 1**  
 Cut Grade **IDEAL**  
 Depth **60.9%**  
 Table **58%**  
 Girdle **Medium (Faceted)**  
 Culet **Pointed**  
 Polish **EXCELLENT**  
 Symmetry **EXCELLENT**  
 Fluorescence **NONE**  
 Inscription(s) **IGI LG626476242**  
 Comments: This Laboratory Grown Diamond was created by Chemical Vapor Deposition (CVD) growth process and may include post-growth treatment. Type IIa