



ELECTRONIC COPY

LABORATORY GROWN DIAMOND REPORT

LG626492008

Report verification at igi.org

LABORATORY GROWN DIAMOND REPORT

LABORATORY GROWN DIAMOND REPORT

LABORATORY GROWN DIAMOND REPORT

March 16, 2024
IGI Report Number LG626492008
Description LABORATORY GROWN DIAMOND
Shape and Cutting Style ROUND BRILLIANT
Measurements 8.12 - 8.18 X 4.94 MM

GRADING RESULTS

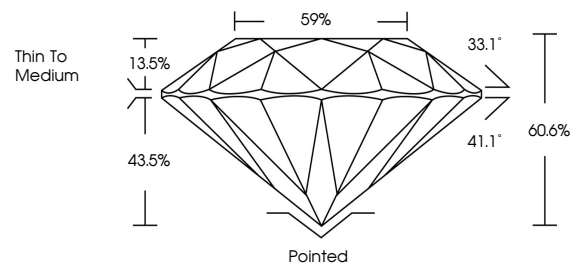
Carat Weight 2.01 CARATS
Color Grade E
Clarity Grade VVS 2
Cut Grade IDEAL

ADDITIONAL GRADING INFORMATION

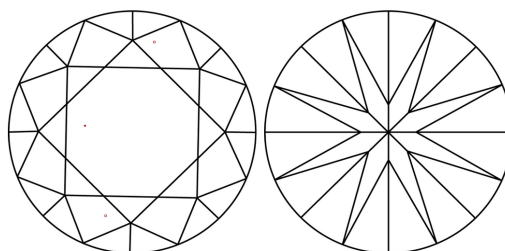
Polish EXCELLENT
Symmetry EXCELLENT
Fluorescence NONE
Inscription(s) IGI LG626492008

Comments: This Laboratory Grown Diamond was created by Chemical Vapor Deposition (CVD) growth process and may include post-growth treatment. Type IIa

PROPORTIONS



CLARITY CHARACTERISTICS



KEY TO SYMBOLS

Red symbols indicate internal characteristics.
Green symbols indicate external characteristics.

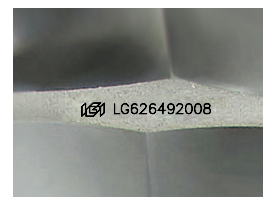
GRADING SCALES

CLARITY

Table mapping clarity grades (IF, VVS 1-2, VS 1-2, SI 1-2, I 1-3) to internal characteristics (Internally Flawless, Very Very Slightly Included, Very Slightly Included, Slightly Included, Included).

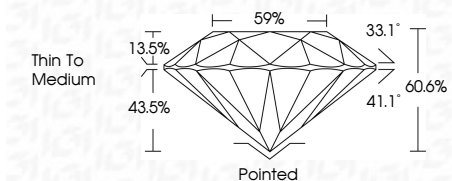
COLOR

Table mapping color grades (D, E, F, G, H, I, J) to color descriptions (Faint, Very Light, Light).



Sample Image Used

March 16, 2024
IGI Report Number LG626492008
Description LABORATORY GROWN DIAMOND
Shape and Cutting Style ROUND BRILLIANT
Measurements 8.12 - 8.18 X 4.94 MM
GRADING RESULTS
Carat Weight 2.01 CARATS
Color Grade E
Clarity Grade VVS 2
Cut Grade IDEAL



ADDITIONAL GRADING INFORMATION

Polish EXCELLENT
Symmetry EXCELLENT
Fluorescence NONE
Inscription(s) IGI LG626492008
Comments: This Laboratory Grown Diamond was created by Chemical Vapor Deposition (CVD) growth process and may include post-growth treatment. Type IIa



Summary of report details including date, report number, measurements, grading results, and additional information.

Comments: This Laboratory Grown Diamond was created by Chemical Vapor Deposition (CVD) growth process and may include post-growth treatment. Type IIa