



ELECTRONIC COPY

LABORATORY GROWN DIAMOND REPORT

March 30, 2024	
IGI Report Number	LG627408754
Description	LABORATORY GROWN DIAMOND
Shape and Cutting Style	ROUND BRILLIANT
Measurements	7.45 - 7.51 X 4.67 MM

GRADING RESULTS

Carat Weight	1.61 CARAT
Color Grade	G
Clarity Grade	VVS 2
Cut Grade	IDEAL

ADDITIONAL GRADING INFORMATION

Polish	EXCELLENT
Symmetry	EXCELLENT
Fluorescence	NONE
Inscription(s)	LG627408754

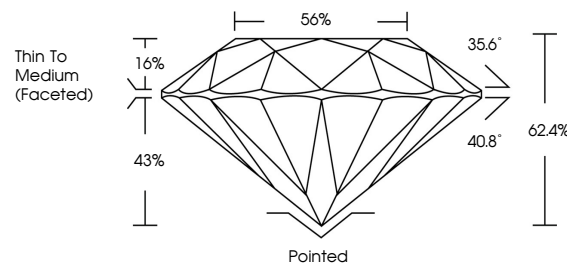
Comments: This Laboratory Grown Diamond was created by Chemical Vapor Deposition (CVD) growth process and may include post-growth treatment. Type IIa

LABORATORY GROWN DIAMOND REPORT

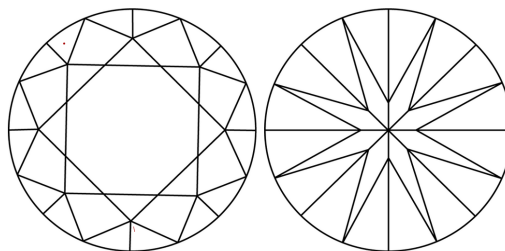
LG627408754

Report verification at igi.org

PROPORTIONS



CLARITY CHARACTERISTICS



KEY TO SYMBOLS

Red symbols indicate internal characteristics.
Green symbols indicate external characteristics.

LABORATORY GROWN
DIAMOND REPORT

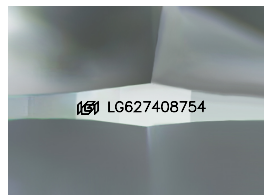
GRADING SCALES

CLARITY

IF	VVS ¹⁻²	VS ¹⁻²	SI ¹⁻²	I ¹⁻³
Internally Flawless	Very Very Slightly Included	Very Slightly Included	Slightly Included	Included

COLOR

D E F G H I J Faint Very Light Light



Sample Image Used



© IGI 2020, International Gemological Institute

FD - 10 20

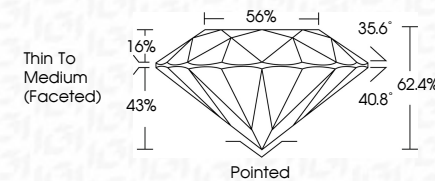
www.igi.org

LABORATORY GROWN DIAMOND REPORT

March 30, 2024	
IGI Report Number	LG627408754
Description	LABORATORY GROWN DIAMOND
Shape and Cutting Style	ROUND BRILLIANT
Measurements	7.45 - 7.51 X 4.67 MM

GRADING RESULTS

Carat Weight	1.61 CARAT
Color Grade	G
Clarity Grade	VVS 2
Cut Grade	IDEAL



ADDITIONAL GRADING INFORMATION

Polish	EXCELLENT
Symmetry	EXCELLENT
Fluorescence	NONE
Inscription(s)	 LG627408754

Comments: This Laboratory Grown Diamond was created by Chemical Vapor Deposition (CVD) growth process and may include post-growth treatment.
Type IIa



IG

March 30, 2024	GI growth No L6527402754	1.61 CARAT	W6 S 2	IDEAL	62.4%	56%	Thin To Medium (faced)	Parted	Excellent	EXCELLENT	NONE	169 L6527402754	Comments: Grown Diamond was created by Chemical Vapor Deposition (CVD) growth process and may include post-growth treatment.
ROUND BRILLIANT	4.85 - 7.51 X 4.57 MM	Color Grade	Clarity Grade	Cut Grade	Depth	Table	Girdle	Quiet	Polish	Symmetry	Fluorescence	Inscription(s)	Type IIA