



ELECTRONIC COPY

LG627411028

Report verification at igi.org

LABORATORY GROWN DIAMOND REPORT

April 3, 2024
 IGI Report Number **LG627411028**
 Description **LABORATORY GROWN
DIAMOND**
 Shape and Cutting Style **ROUND BRILLIANT**
 Measurements **10.10 - 10.17 X 6.44 MM**

GRADING RESULTS

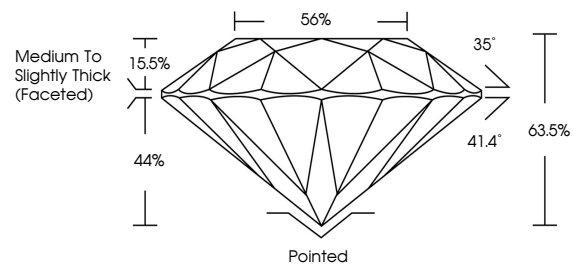
Carat Weight **4.09 CARATS**
 Color Grade **H**
 Clarity Grade **VS 2**
 Cut Grade **EXCELLENT**

ADDITIONAL GRADING INFORMATION

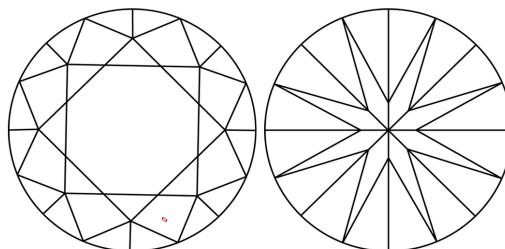
Polish **EXCELLENT**
 Symmetry **EXCELLENT**
 Fluorescence **NONE**
 Inscription(s) **IGI LG627411028**

Comments: This Laboratory Grown Diamond was created by Chemical Vapor Deposition (CVD) growth process and may include post-growth treatment. Type IIa

PROPORTIONS



CLARITY CHARACTERISTICS



KEY TO SYMBOLS

Red symbols indicate internal characteristics.
 Green symbols indicate external characteristics.

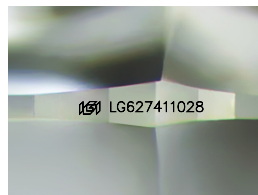
GRADING SCALES

CLARITY

IF	VVS ¹⁻²	VS ¹⁻²	SI ¹⁻²	I ¹⁻³
Internally Flawless	Very Very Slightly Included	Very Slightly Included	Slightly Included	Included

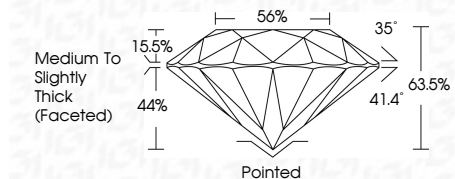
COLOR

D	E	F	G	H	I	J	Faint	Very Light	Light
---	---	---	---	---	---	---	-------	------------	-------



Sample Image Used

April 3, 2024
 IGI Report Number **LG627411028**
 Description **LABORATORY GROWN
DIAMOND**
 Shape and Cutting Style **ROUND BRILLIANT**
 Measurements **10.10 - 10.17 X 6.44 MM**
GRADING RESULTS
 Carat Weight **4.09 CARATS**
 Color Grade **H**
 Clarity Grade **VS 2**
 Cut Grade **EXCELLENT**



ADDITIONAL GRADING INFORMATION

Polish **EXCELLENT**
 Symmetry **EXCELLENT**
 Fluorescence **NONE**
 Inscription(s) **IGI LG627411028**
 Comments: This Laboratory Grown Diamond was created by Chemical Vapor Deposition (CVD) growth process and may include post-growth treatment. Type IIa



IGI



April 3, 2024
 IGI Report No LG627411028
ROUND BRILLIANT
 10.10 - 10.17 X 6.44 MM
4.09 CARATS
 H
VS 2
EXCELLENT
 63.5%
 56%
 Medium To Slightly Thick (Faceted)
 Pointed
EXCELLENT
EXCELLENT
EXCELLENT
NONE
 IGI LG627411028
 Comments: This Laboratory Grown Diamond was created by Chemical Vapor Deposition (CVD) growth process and may include post-growth treatment. Type IIa