



ELECTRONIC COPY

LG627413754

Report verification at igi.org

LABORATORY GROWN DIAMOND REPORT

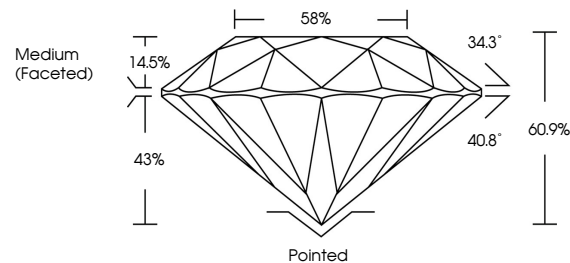
March 28, 2024
IGI Report Number LG627413754
Description LABORATORY GROWN DIAMOND
Shape and Cutting Style ROUND BRILLIANT
Measurements 8.37 - 8.40 X 5.11 MM
GRADING RESULTS
Carat Weight 2.20 CARATS
Color Grade E
Clarity Grade VVS 1
Cut Grade IDEAL

ADDITIONAL GRADING INFORMATION

Polish EXCELLENT
Symmetry EXCELLENT
Fluorescence NONE
Inscription(s) IGI LG627413754

Comments: HEARTS & ARROWS
This Laboratory Grown Diamond was created by Chemical Vapor Deposition (CVD) growth process and may include post-growth treatment. Type IIa

PROPORTIONS



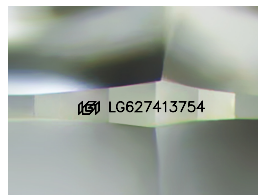
GRADING SCALES

CLARITY

Table with 5 columns: IF, VVS 1-2, VS 1-2, SI 1-2, I 1-3. Row 1: Internally Flawless, Very Very Slightly Included, Very Slightly Included, Slightly Included, Included

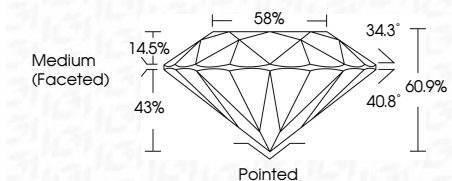
COLOR

Table with 11 columns: D, E, F, G, H, I, J, Faint, Very Light, Light



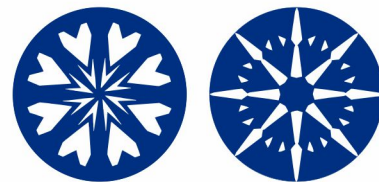
Sample Image Used

March 28, 2024
IGI Report Number LG627413754
Description LABORATORY GROWN DIAMOND
Shape and Cutting Style ROUND BRILLIANT
Measurements 8.37 - 8.40 X 5.11 MM
GRADING RESULTS
Carat Weight 2.20 CARATS
Color Grade E
Clarity Grade VVS 1
Cut Grade IDEAL



ADDITIONAL GRADING INFORMATION

Polish EXCELLENT
Symmetry EXCELLENT
Fluorescence NONE
Inscription(s) IGI LG627413754
Comments: HEARTS & ARROWS
This Laboratory Grown Diamond was created by Chemical Vapor Deposition (CVD) growth process and may include post-growth treatment. Type IIa



IGI

March 28, 2024
IGI Report No LG627413754
ROUND BRILLIANT
8.37 - 8.40 X 5.11 MM
2.20 CARATS
Color Grade E
Clarity Grade VVS 1
Depth 60.9%
Table 58%
Medium (Faceted)
Culet Pointed
Polish EXCELLENT
Symmetry EXCELLENT
Fluorescence NONE
Inscriptions(s) IGI LG627413754
Comments: HEARTS & ARROWS
This Laboratory Grown Diamond was created by Chemical Vapor Deposition (CVD) growth process and may include post-growth treatment. Type IIa