



**INTERNATIONAL
GEMOLOGICAL
INSTITUTE**

ELECTRONIC COPY

**LABORATORY GROWN
DIAMOND REPORT**

LG627415777

**IGI LABORATORY GROWN
DIAMOND ID REPORT**

April 8, 2024

IGI Report Number **LG627415777**

**CUT CORNERED RECTANGULAR
MODIFIED BRILLIANT
5.16 X 3.51 X 2.46 MM**

Carat Weight 0.43 CARAT
Color Grade FANCY VIVID PINK
Clarity Grade VS 1
Polish EXCELLENT
Symmetry GOOD
Fluorescence SLIGHT
Inscription(s) LG627415777

Comments: This Laboratory Grown Diamond was created by Chemical Vapor Deposition (CVD) growth process. Indications of post-growth treatment.

LABORATORY GROWN DIAMOND REPORT

IGI LABORATORY GROWN DIAMOND IDENTIFICATION REPORT

April 8, 2024

IGI Report Number **LG627415777**

Description **LABORATORY GROWN DIAMOND**
Shape and Cutting Style **CUT CORNERED RECTANGULAR MODIFIED
BRILLIANT**

Measurements **5.16 X 3.51 X 2.46 MM**

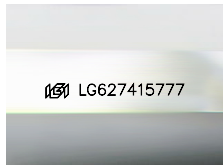
GRADING RESULTS

Carat Weight 0.43 CARAT
Color Grade FANCY VIVID PINK
Clarity Grade VS 1

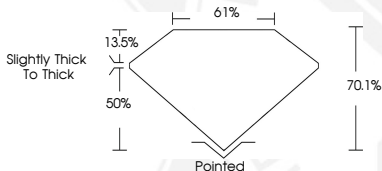
ADDITIONAL GRADING INFORMATION

Polish EXCELLENT
Symmetry GOOD
Fluorescence SLIGHT
Inscription(s) LG627415777

Comments: This Laboratory Grown Diamond was created by Chemical Vapor Deposition (CVD) growth process. Indications of post-growth treatment.



Sample Image Used



**IGI LABORATORY GROWN
DIAMOND ID REPORT**

April 8, 2024

IGI Report Number **LG627415777**

**CUT CORNERED RECTANGULAR
MODIFIED BRILLIANT
5.16 X 3.51 X 2.46 MM**

Carat Weight 0.43 CARAT
Color Grade FANCY VIVID PINK
Clarity Grade VS 1
Polish EXCELLENT
Symmetry GOOD
Fluorescence SLIGHT
Inscription(s) LG627415777

Comments: This Laboratory Grown Diamond was created by Chemical Vapor Deposition (CVD) growth process. Indications of post-growth treatment.

THIS DOCUMENT WAS PRODUCED WITH THE FOLLOWING SECURITY MEASURES: SPECIAL DOCUMENT PAPER, INK SCREENS, WATERMARK, BACKGROUND DESIGN, HOLOGRAM AND OTHER SECURITY FEATURES NOT LISTED AND DO EXCEED DOCUMENT SECURITY INDUSTRY GUIDELINES.

For terms & conditions and to verify this report, please visit www.igi.org