



ELECTRONIC COPY

LABORATORY GROWN DIAMOND REPORT

LG627420187

Report verification at igi.org

LABORATORY GROWN DIAMOND REPORT

LABORATORY GROWN DIAMOND REPORT

LABORATORY GROWN DIAMOND REPORT

April 3, 2024
IGI Report Number LG627420187
Description LABORATORY GROWN DIAMOND
Shape and Cutting Style ROUND BRILLIANT
Measurements 12.43 - 12.50 X 7.73 MM

GRADING RESULTS

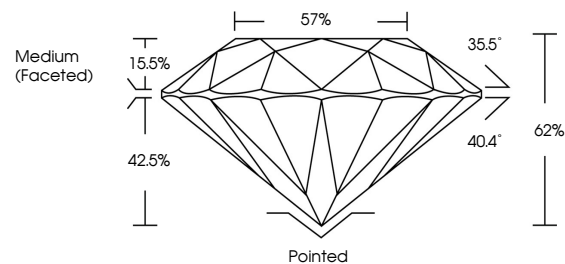
Carat Weight 7.51 CARATS
Color Grade E
Clarity Grade VS 2
Cut Grade IDEAL

ADDITIONAL GRADING INFORMATION

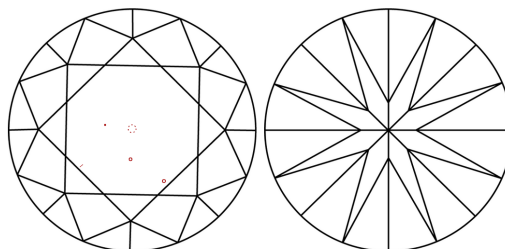
Polish EXCELLENT
Symmetry EXCELLENT
Fluorescence NONE
Inscription(s) IGI LG627420187

Comments: HEARTS & ARROWS
This Laboratory Grown Diamond was created by Chemical Vapor Deposition (CVD) growth process and may include post-growth treatment. Type IIa

PROPORTIONS



CLARITY CHARACTERISTICS



KEY TO SYMBOLS

Red symbols indicate internal characteristics.
Green symbols indicate external characteristics.



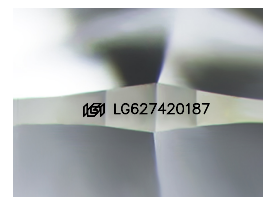
GRADING SCALES

CLARITY

Table mapping clarity grades (IF, VVS, VS, SI, I) to internal characteristics (Internally Flawless, Very Very Slightly Included, etc.)

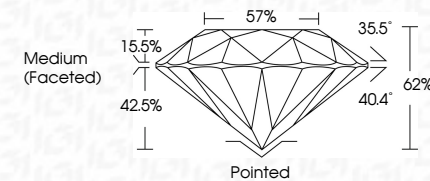
COLOR

Table mapping color grades (D, E, F, G, H, I, J) to color descriptions (Faint, Very Light, Light)



Sample Image Used

April 3, 2024
IGI Report Number LG627420187
Description LABORATORY GROWN DIAMOND
Shape and Cutting Style ROUND BRILLIANT
Measurements 12.43 - 12.50 X 7.73 MM
GRADING RESULTS
Carat Weight 7.51 CARATS
Color Grade E
Clarity Grade VS 2
Cut Grade IDEAL



ADDITIONAL GRADING INFORMATION

Polish EXCELLENT
Symmetry EXCELLENT
Fluorescence NONE
Inscription(s) IGI LG627420187
Comments: HEARTS & ARROWS
This Laboratory Grown Diamond was created by Chemical Vapor Deposition (CVD) growth process and may include post-growth treatment. Type IIa



Summary table of diamond specifications: April 3, 2024, IGI Report No LG627420187, ROUND BRILLIANT, 12.43 - 12.50 X 7.73 MM, 7.51 CARATS, E, VS 2, IDEAL, 62%, 57%, Medium (Faceted), Polished, EXCELLENT, EXCELLENT, NONE, IGI LG627420187.

Comments: HEARTS & ARROWS
This Laboratory Grown Diamond was created by Chemical Vapor Deposition (CVD) growth process and may include post-growth treatment. Type IIa