



**INTERNATIONAL
GEMOLOGICAL
INSTITUTE**

ELECTRONIC COPY

**LABORATORY GROWN
DIAMOND REPORT**

LG627422794

**IGI LABORATORY GROWN
DIAMOND ID REPORT**

April 3, 2024

IGI Report Number **LG627422794**

**CUT CORNERED RECTANGULAR
BRILLIANT**

6.11 X 4.13 X 2.83 MM

Carat Weight 0.61 CARAT
Color Grade G
Clarity Grade VS 1
Polish EXCELLENT
Symmetry EXCELLENT
Fluorescence NONE
Inscription(s) LG627422794

Comments: This Laboratory Grown Diamond was created by Chemical Vapor Deposition (CVD) growth process and may include post-growth treatment. Type Ila

LABORATORY GROWN DIAMOND REPORT

IGI LABORATORY GROWN DIAMOND IDENTIFICATION REPORT

April 3, 2024

IGI Report Number

LG627422794

Description **LABORATORY GROWN DIAMOND**

Shape and Cutting Style **CUT CORNERED RECTANGULAR BRILLIANT**

Measurements **6.11 X 4.13 X 2.83 MM**

GRADING RESULTS

Carat Weight 0.61 CARAT

Color Grade G

Clarity Grade VS 1

ADDITIONAL GRADING INFORMATION

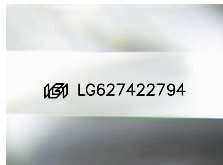
Polish EXCELLENT

Symmetry EXCELLENT

Fluorescence NONE

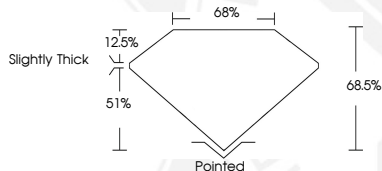
Inscription(s) LG627422794

Comments: This Laboratory Grown Diamond was created by Chemical Vapor Deposition (CVD) growth process and may include post-growth treatment. Type Ila



LG627422794

Sample Image Used



**IGI LABORATORY GROWN
DIAMOND ID REPORT**

April 3, 2024

IGI Report Number **LG627422794**

**CUT CORNERED RECTANGULAR
BRILLIANT**

6.11 X 4.13 X 2.83 MM

Carat Weight 0.61 CARAT
Color Grade G
Clarity Grade VS 1
Polish EXCELLENT
Symmetry EXCELLENT
Fluorescence NONE
Inscription(s) LG627422794

Comments: This Laboratory Grown Diamond was created by Chemical Vapor Deposition (CVD) growth process and may include post-growth treatment. Type Ila

THIS DOCUMENT WAS PRODUCED WITH THE FOLLOWING SECURITY MEASURES: SPECIAL DOCUMENT PAPER, INK SCREENS, WATERMARK, BACKGROUND DESIGN, HOLOGRAM AND OTHER SECURITY FEATURES NOT LISTED AND DO EXCEED DOCUMENT SECURITY INDUSTRY GUIDELINES.

For terms & conditions and to verify this report, please visit www.igi.org