



ELECTRONIC COPY

LG627432165

Report verification at igi.org

LABORATORY GROWN DIAMOND REPORT

April 1, 2024
IGI Report Number **LG627432165**
Description **LABORATORY GROWN
DIAMOND**
Shape and Cutting Style **ROUND BRILLIANT**
Measurements **8.77 - 8.81 X 5.31 MM**

GRADING RESULTS

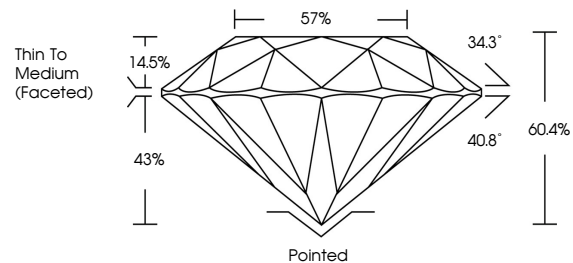
Carat Weight **2.47 CARATS**
Color Grade **D**
Clarity Grade **VVS 2**
Cut Grade **IDEAL**

ADDITIONAL GRADING INFORMATION

Polish **EXCELLENT**
Symmetry **EXCELLENT**
Fluorescence **NONE**
Inscription(s) **LG627432165**

Comments: HEARTS & ARROWS
This Laboratory Grown Diamond was created by
Chemical Vapor Deposition (CVD) growth process and
may include post-growth treatment.
Type IIa

PROPORTIONS



GRADING SCALES

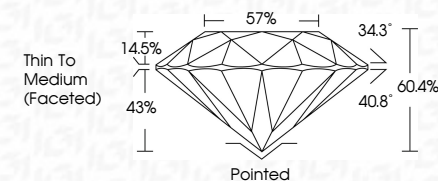
CLARITY

IF	VVS ¹⁻²	VS ¹⁻²	SI ¹⁻²	I ¹⁻³
Internally Flawless	Very Very Slightly Included	Very Slightly Included	Slightly Included	Included

COLOR

D	E	F	G	H	I	J	Faint	Very Light	Light
---	---	---	---	---	---	---	-------	------------	-------

April 1, 2024
IGI Report Number **LG627432165**
Description **LABORATORY GROWN
DIAMOND**
Shape and Cutting Style **ROUND BRILLIANT**
Measurements **8.77 - 8.81 X 5.31 MM**
GRADING RESULTS
Carat Weight **2.47 CARATS**
Color Grade **D**
Clarity Grade **VVS 2**
Cut Grade **IDEAL**

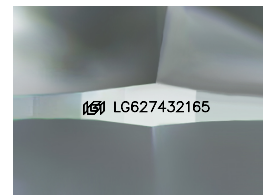


ADDITIONAL GRADING INFORMATION

Polish **EXCELLENT**
Symmetry **EXCELLENT**
Fluorescence **NONE**
Inscription(s) **LG627432165**
Comments: HEARTS & ARROWS
This Laboratory Grown Diamond was created by
Chemical Vapor Deposition (CVD) growth process and
may include post-growth treatment.
Type IIa



www.igi.org



Sample Image Used



April 1, 2024	IGI Report No LG627432165	2.47 CARATS	D
ROUND BRILLIANT	8.77 - 8.81 X 5.31 MM	VVS 2	IDEAL
Carat Weight	Color Grade	Depth	60.4%
Clarity Grade	Cut Grade	Table	57%
Color Grade	Thin To Medium (Faceted)	Culet	Pointed
Clarity Grade	Polish	Symmetry	EXCELLENT
Depth	Fluorescence	Inscriptions(s)	NONE
Table	Inscriptions(s)		LG627432165
Grade			

Comments: HEARTS & ARROWS
This Laboratory Grown Diamond was created by Chemical Vapor Deposition (CVD) growth process and may include post-growth treatment.
Type IIa