



ELECTRONIC COPY

LG627432467

Report verification at igi.org

LABORATORY GROWN DIAMOND REPORT

April 1, 2024
IGI Report Number **LG627432467**

Description **LABORATORY GROWN
DIAMOND**
Shape and Cutting Style **ROUND BRILLIANT**
Measurements **9.61 - 9.67 X 6.00 MM**

GRADING RESULTS

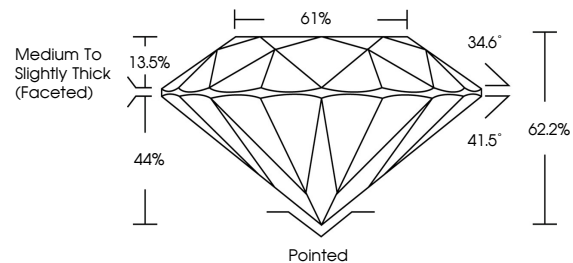
Carat Weight **3.49 CARATS**
Color Grade **F**
Clarity Grade **VS 2**
Cut Grade **EXCELLENT**

ADDITIONAL GRADING INFORMATION

Polish **EXCELLENT**
Symmetry **EXCELLENT**
Fluorescence **NONE**
Inscription(s) **LG627432467**

Comments: This Laboratory Grown Diamond was created by Chemical Vapor Deposition (CVD) growth process and may include post-growth treatment. Type IIa

PROPORTIONS



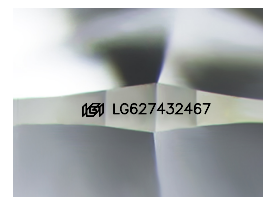
GRADING SCALES

CLARITY

IF	VVS ¹⁻²	VS ¹⁻²	SI ¹⁻²	I ¹⁻³
Internally Flawless	Very Very Slightly Included	Very Slightly Included	Slightly Included	Included

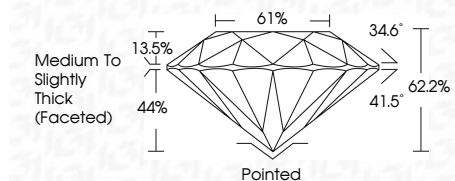
COLOR

D	E	F	G	H	I	J	Faint	Very Light	Light
---	---	---	---	---	---	---	-------	------------	-------



Sample Image Used

April 1, 2024
IGI Report Number **LG627432467**
Description **LABORATORY GROWN
DIAMOND**
Shape and Cutting Style **ROUND BRILLIANT**
Measurements **9.61 - 9.67 X 6.00 MM**
GRADING RESULTS
Carat Weight **3.49 CARATS**
Color Grade **F**
Clarity Grade **VS 2**
Cut Grade **EXCELLENT**



ADDITIONAL GRADING INFORMATION

Polish **EXCELLENT**
Symmetry **EXCELLENT**
Fluorescence **NONE**
Inscription(s) **LG627432467**
Comments: This Laboratory Grown Diamond was created by Chemical Vapor Deposition (CVD) growth process and may include post-growth treatment. Type IIa



IGI

April 1, 2024	IGI Report No LG627432467	3.49 CARATS	F	VS 2	EXCELLENT	61%	62.2%	44%	34.6°	41.5°	62.2%	Pointed	EXCELLENT	EXCELLENT	NONE	LG627432467
ROUND BRILLIANT	9.61 - 9.67 X 6.00 MM	Carat Weight	Color Grade	Clarity Grade	Cut Grade	Table	Depth	Girdle	Crown Angle	Pavilion Angle	Depth	Culet	Polish	Symmetry	Fluorescence	Inscription(s)

Comments: This Laboratory Grown Diamond was created by Chemical Vapor Deposition (CVD) growth process and may include post-growth treatment. Type IIa