



ELECTRONIC COPY

LABORATORY GROWN DIAMOND REPORT

March 24, 2024
 IGI Report Number **LG627443415**
 Description **LABORATORY GROWN
DIAMOND**
 Shape and Cutting Style **ROUND BRILLIANT**
 Measurements **8.38 - 8.42 X 5.12 MM**

GRADING RESULTS

Carat Weight **2.21 CARATS**
 Color Grade **H**
 Clarity Grade **VS 1**
 Cut Grade **IDEAL**

ADDITIONAL GRADING INFORMATION

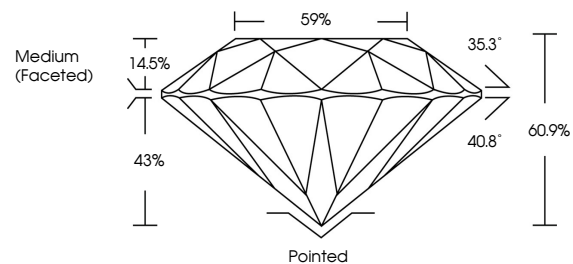
Polish **EXCELLENT**
 Symmetry **EXCELLENT**
 Fluorescence **NONE**
 Inscription(s) **IGI LG627443415**

Comments: This Laboratory Grown Diamond was created by Chemical Vapor Deposition (CVD) growth process and may include post-growth treatment. Type IIa

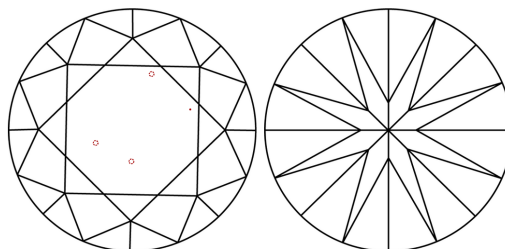
LABORATORY GROWN DIAMOND REPORT

LG627443415
 Report verification at igi.org

PROPORTIONS



CLARITY CHARACTERISTICS



KEY TO SYMBOLS

Red symbols indicate internal characteristics.
 Green symbols indicate external characteristics.

**LABORATORY GROWN
DIAMOND REPORT**

GRADING SCALES

CLARITY

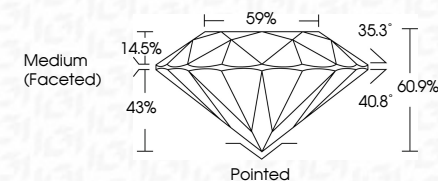
| IF | VVS ¹⁻² | VS ¹⁻² | SI ¹⁻² | I ¹⁻³ |
|------------------------|--------------------------------|---------------------------|----------------------|------------------|
| Internally Flawless | Very Very Slightly Included | Very Slightly Included | Slightly Included | Included |

COLOR

| D | E | F | G | H | I | J | Faint | Very Light | Light |
|---|---|---|---|---|---|---|-------|------------|-------|
|---|---|---|---|---|---|---|-------|------------|-------|

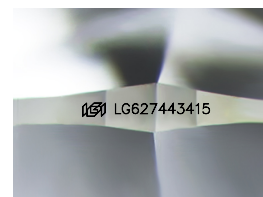
LABORATORY GROWN DIAMOND REPORT

March 24, 2024
 IGI Report Number **LG627443415**
 Description **LABORATORY GROWN
DIAMOND**
 Shape and Cutting Style **ROUND BRILLIANT**
 Measurements **8.38 - 8.42 X 5.12 MM**
GRADING RESULTS
 Carat Weight **2.21 CARATS**
 Color Grade **H**
 Clarity Grade **VS 1**
 Cut Grade **IDEAL**



ADDITIONAL GRADING INFORMATION

Polish **EXCELLENT**
 Symmetry **EXCELLENT**
 Fluorescence **NONE**
 Inscription(s) **IGI LG627443415**
 Comments: This Laboratory Grown Diamond was created by Chemical Vapor Deposition (CVD) growth process and may include post-growth treatment. Type IIa



Sample Image Used



| | | | | | | | | | | | | | |
|---------------------------|---------------------------|-----------------------|-------------|---------------|-----------|-------|-------|------------------|---------|-----------|-----------|--------------|-----------------|
| March 24, 2024 | IGI Report No LG627443415 | 2.21 CARATS | H | VS 1 | IDEAL | 60.9% | 59% | Medium (Faceted) | Pointed | EXCELLENT | EXCELLENT | NONE | IGI LG627443415 |
| IGI Report No LG627443415 | ROUND BRILLIANT | 8.38 - 8.42 X 5.12 MM | Color Grade | Clarity Grade | Cut Grade | Depth | Table | Girdle | Culet | Polish | Symmetry | Fluorescence | Inscription(s) |

Comments: This Laboratory Grown Diamond was created by Chemical Vapor Deposition (CVD) growth process and may include post-growth treatment. Type IIa