



ELECTRONIC COPY

LABORATORY GROWN DIAMOND REPORT

March 27, 2024	
IGI Report Number	LG627443948
Description	LABORATORY GROWN DIAMOND
Shape and Cutting Style	ROUND BRILLIANT
Measurements	9.27 - 9.35 X 5.68 MM

GRADING RESULTS

Carat Weight	3.01 CARATS
Color Grade	G
Clarity Grade	SI 1
Cut Grade	IDEAL

ADDITIONAL GRADING INFORMATION

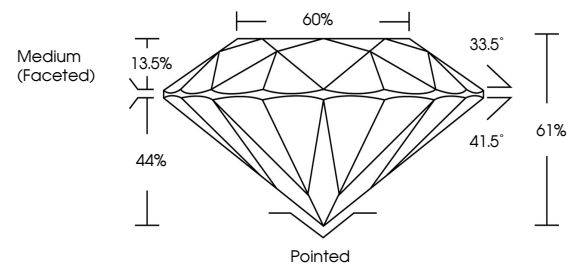
Polish	EXCELLENT
Symmetry	EXCELLENT
Fluorescence	NONE
Inscription(s)	15 LG627443948

Comments: This Laboratory Grown Diamond was created by Chemical Vapor Deposition (CVD) growth process and may include post-growth treatment.
Type IIa

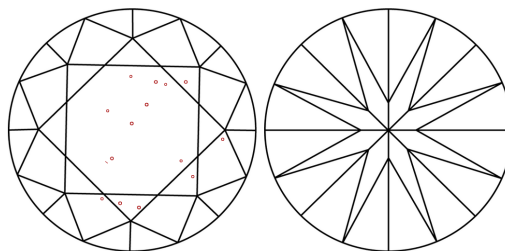
LABORATORY GROWN DIAMOND REPORT

LG627443948
Report verification at igi.org

PROPORTIONS



CLARITY CHARACTERISTICS



KEY TO SYMBOLS

Red symbols indicate internal characteristics.
Green symbols indicate external characteristics.

LABORATORY GROWN
DIAMOND REPORT

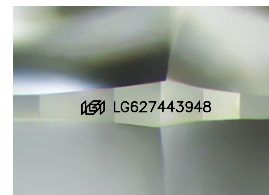
GRADING SCALES

CLARITY

IF	VVS ¹⁻²	VS ¹⁻²	SI ¹⁻²	I ¹⁻³
Internally Flawless	Very Very Slightly Included	Very Slightly Included	Slightly Included	Included

COLOR

D E F G H I J Faint Very Light Light



Sample Image Used



© IGI 2020, International Gemological Institute

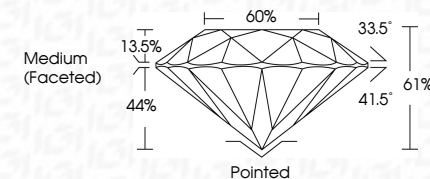
FD - 10 20

LABORATORY GROWN DIAMOND REPORT

March 27, 2024	
IGI Report Number	LG627443948
Description	LABORATORY GROWN DIAMOND
Shape and Cutting Style	ROUND BRILLIANT
Measurements	9.27 - 9.35 X 5.68 MM

GRADING RESULTS

Carat Weight	3.01 CARATS
Color Grade	G
Clarity Grade	SI 1
Cut Grade	IDEAL



ADDITIONAL GRADING INFORMATION

Polish	EXCELLENT
Symmetry	EXCELLENT
Fluorescence	NONE
Inscription(s)	 LG627443948

Comments: This Laboratory Grown Diamond was created by Chemical Vapor Deposition (CVD) growth process and may include post-growth treatment.
Type IIa



IG

March 27, 2024	3.01 CARATS
GI Report No. LG27449948	G
ROUND BRILLIANT	S I 1
	IDEAL
	61%
	60%
	Medium (Faceted)
	Painted
	EXCELLENT
	EXCELLENT
	NONE
	#61 LG27449948
Carat Weight	
Color Grade	
Clarity Grade	
Cut Grade	
Depth	
Table	
Girdle	
Culet	
Polish	
Symmetry	
Fluorescence	
Inscriptions(s)	
Comments:	
	This Laboratory Grown Diamond was created by Chemical Vapor Deposition and may include growth inclusions and may require post-growth treatment.
	Type IIa