



**ELECTRONIC COPY**

LG627461508

Report verification at [igi.org](http://igi.org)

**LABORATORY GROWN DIAMOND REPORT**

March 26, 2024  
 IGI Report Number **LG627461508**  
 Description **LABORATORY GROWN  
DIAMOND**  
 Shape and Cutting Style **ROUND BRILLIANT**  
 Measurements **6.90 - 6.93 X 4.28 MM**

**GRADING RESULTS**

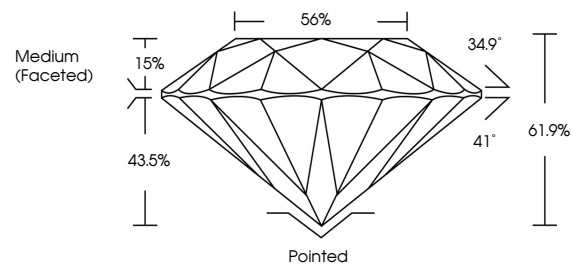
Carat Weight **1.25 CARAT**  
 Color Grade **D**  
 Clarity Grade **VVS 2**  
 Cut Grade **IDEAL**

**ADDITIONAL GRADING INFORMATION**

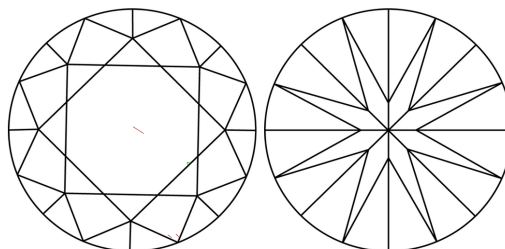
Polish **EXCELLENT**  
 Symmetry **EXCELLENT**  
 Fluorescence **NONE**  
 Inscription(s) **IGI LG627461508**

Comments: As Grown - No indication of post-growth treatment.  
 This Laboratory Grown Diamond was created by High Pressure High Temperature (HPHT) growth process.  
 Type II

**PROPORTIONS**



**CLARITY CHARACTERISTICS**



**KEY TO SYMBOLS**

Red symbols indicate internal characteristics.  
 Green symbols indicate external characteristics.

**GRADING SCALES**

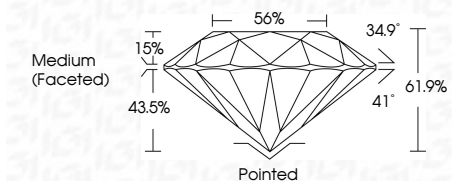
**CLARITY**

| IF                  | VVS <sup>1-2</sup>          | VS <sup>1-2</sup>      | SI <sup>1-2</sup> | I <sup>1-3</sup> |
|---------------------|-----------------------------|------------------------|-------------------|------------------|
| Internally Flawless | Very Very Slightly Included | Very Slightly Included | Slightly Included | Included         |

**COLOR**

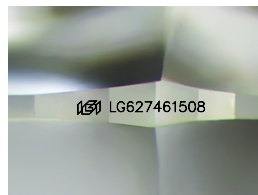
| D | E | F | G | H | I | J | Faint | Very Light | Light |
|---|---|---|---|---|---|---|-------|------------|-------|
|---|---|---|---|---|---|---|-------|------------|-------|

March 26, 2024  
 IGI Report Number **LG627461508**  
 Description **LABORATORY GROWN  
DIAMOND**  
 Shape and Cutting Style **ROUND BRILLIANT**  
 Measurements **6.90 - 6.93 X 4.28 MM**  
**GRADING RESULTS**  
 Carat Weight **1.25 CARAT**  
 Color Grade **D**  
 Clarity Grade **VVS 2**  
 Cut Grade **IDEAL**



**ADDITIONAL GRADING INFORMATION**

Polish **EXCELLENT**  
 Symmetry **EXCELLENT**  
 Fluorescence **NONE**  
 Inscription(s) **IGI LG627461508**  
 Comments: As Grown - No indication of post-growth treatment.  
 This Laboratory Grown Diamond was created by High Pressure High Temperature (HPHT) growth process.  
 Type II



Sample Image Used



|                |                           |                 |                       |            |        |       |        |          |              |                  |   |           |           |      |                 |
|----------------|---------------------------|-----------------|-----------------------|------------|--------|-------|--------|----------|--------------|------------------|---|-----------|-----------|------|-----------------|
| March 26, 2024 | IGI Report No LG627461508 | ROUND BRILLIANT | 6.90 - 6.93 X 4.28 MM | 1.25 CARAT | D      | VVS 2 | IDEAL  | 61.9%    | 56%          | Medium (Faceted) | Pointed   | EXCELLENT | EXCELLENT | NONE | IGI LG627461508 |
| Color Grade    | Clarity Grade             | Cut Grade       | Depth                 | Table      | Girdle | Color | Polish | Symmetry | Fluorescence | Inscription(s)   | Comments: As Grown - No indication of post-growth treatment. This Laboratory Grown Diamond was created by High Pressure High Temperature (HPHT) growth process. Type II |           |           |      |                 |