



ELECTRONIC COPY

LABORATORY GROWN DIAMOND REPORT

LG627470746

Report verification at igi.org

**LABORATORY GROWN
DIAMOND REPORT**

LABORATORY GROWN DIAMOND REPORT

LABORATORY GROWN DIAMOND REPORT

March 26, 2024
 IGI Report Number **LG627470746**
 Description **LABORATORY GROWN
DIAMOND**
 Shape and Cutting Style **ROUND BRILLIANT**
 Measurements **9.53 - 9.56 X 5.89 MM**

GRADING RESULTS

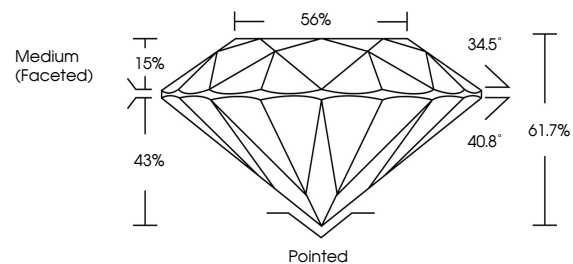
Carat Weight **3.31 CARATS**
 Color Grade **D**
 Clarity Grade **VVS 1**
 Cut Grade **IDEAL**

ADDITIONAL GRADING INFORMATION

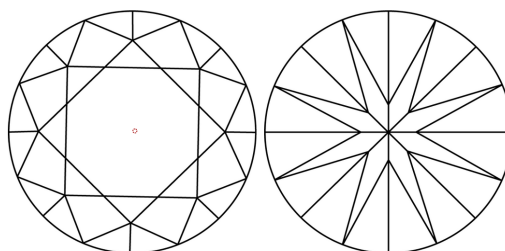
Polish **EXCELLENT**
 Symmetry **EXCELLENT**
 Fluorescence **NONE**
 Inscription(s) **IGI LG627470746**

Comments: HEARTS & ARROWS
 As Grown - No indication of post-growth treatment.
 This Laboratory Grown Diamond was created by High Pressure High Temperature (HPHT) growth process.
 Type II

PROPORTIONS



CLARITY CHARACTERISTICS



KEY TO SYMBOLS

Red symbols indicate internal characteristics.
 Green symbols indicate external characteristics.



GRADING SCALES

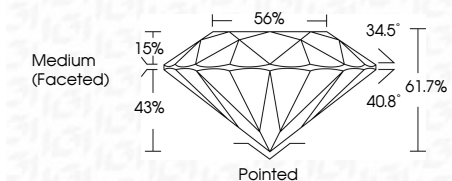
CLARITY

IF	VVS ¹⁻²	VS ¹⁻²	SI ¹⁻²	I ¹⁻³
Internally Flawless	Very Very Slightly Included	Very Slightly Included	Slightly Included	Included

COLOR

D	E	F	G	H	I	J	Faint	Very Light	Light
---	---	---	---	---	---	---	-------	------------	-------

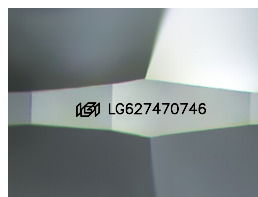
March 26, 2024
 IGI Report Number **LG627470746**
 Description **LABORATORY GROWN
DIAMOND**
 Shape and Cutting Style **ROUND BRILLIANT**
 Measurements **9.53 - 9.56 X 5.89 MM**
GRADING RESULTS
 Carat Weight **3.31 CARATS**
 Color Grade **D**
 Clarity Grade **VVS 1**
 Cut Grade **IDEAL**



ADDITIONAL GRADING INFORMATION

Polish **EXCELLENT**
 Symmetry **EXCELLENT**
 Fluorescence **NONE**
 Inscription(s) **IGI LG627470746**

Comments: HEARTS & ARROWS
 As Grown - No indication of post-growth treatment.
 This Laboratory Grown Diamond was created by High Pressure High Temperature (HPHT) growth process.
 Type II



Sample Image Used



March 26, 2024	IGI Report No LG627470746	3.31 CARATS	D	Pointed	EXCELLENT	EXCELLENT	NONE	IGI LG627470746
ROUND BRILLIANT	9.53 - 9.56 X 5.89 MM	Color Grade	VVS 1	Depth	61.7%	Table	56%	Medium (Faceted)
Carat Weight	3.31 CARATS	Clarity Grade	VVS 1	Culet	None	Polish	EXCELLENT	None
Color Grade	D	Cut Grade	IDEAL	Symmetry	EXCELLENT	Symmetry	EXCELLENT	None
Fluorescence	NONE	Inscription(s)	IGI LG627470746	Fluorescence	NONE	Inscriptions(s)	IGI LG627470746	None

Comments: HEARTS & ARROWS
 As Grown - No indication of post-growth treatment.
 This Laboratory Grown Diamond was created by High Pressure High Temperature (HPHT) growth process.
 Type II